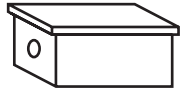


# PAPER MODEL DIY!

You know Leeuwarden's iconic buildings: de Waag, the Achmeatoren, and the Oldehove; but have you ever thought that they'd look better lined up next to the Prinsentuin? There are plenty of ways to re-imagine the city, so go crazy! All you need to make the model-box is a **shoe-box** with a lid, **glue**, **pens**; and/or **colouring pencils**, and some **scissors**.

First step is to cut a small viewing hold in the short side of the box. They, colour in your favourite Leeuwarder icons, and stick them in to the bottom so that they stick upright. Or, hang them from the box!



SHOE-BOX



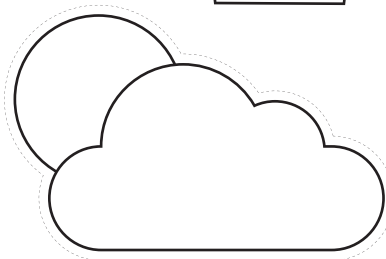
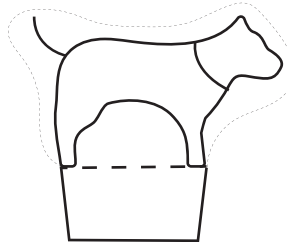
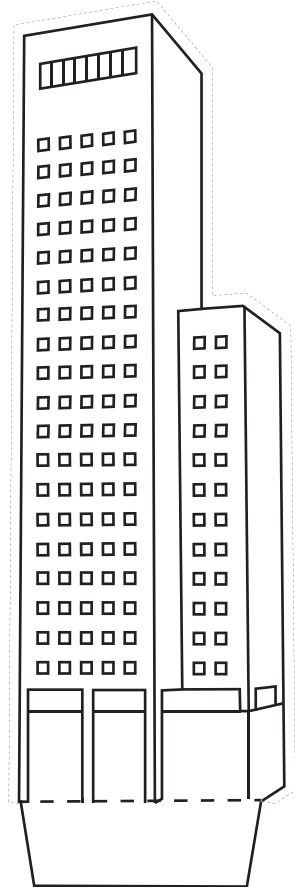
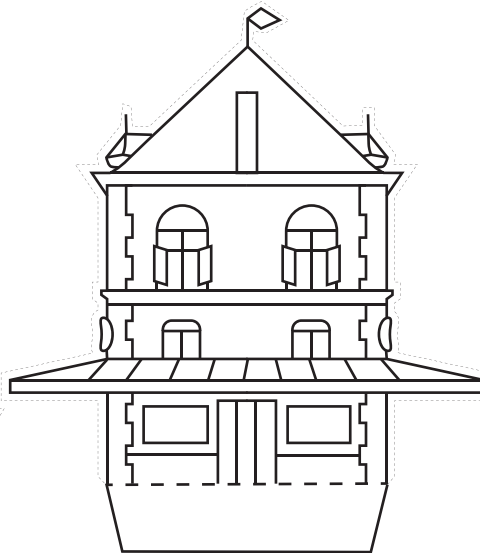
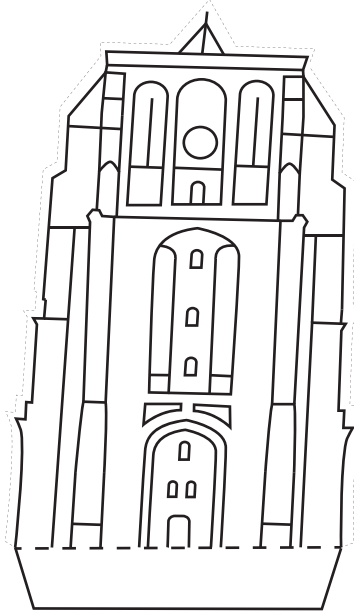
GLUE



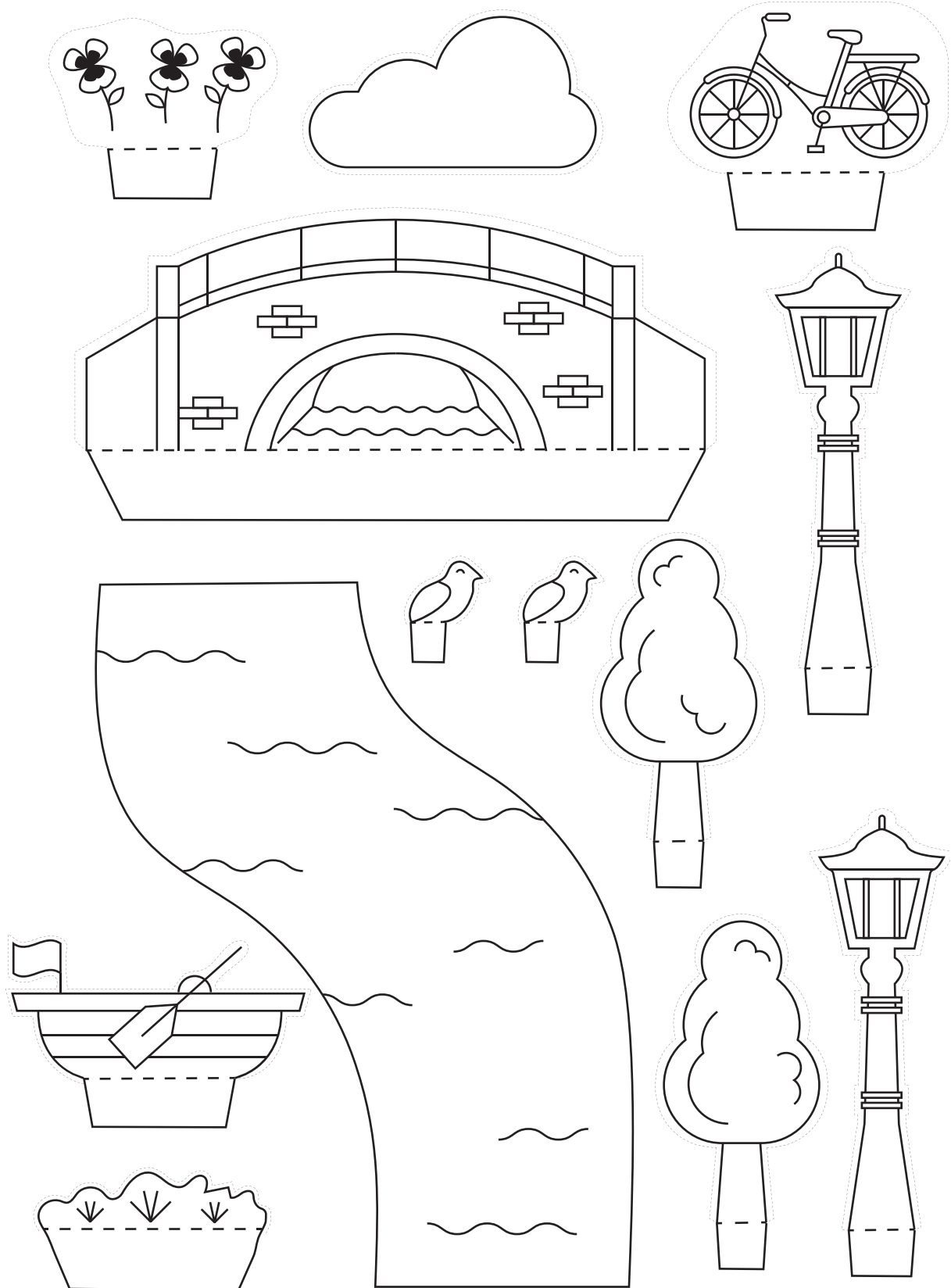
PENS & PENCILS



SCISSORS



# VISIT Leeuwarden



TIP! Make your scene even more magical with coloured film, (glitter)-paper, or colourful stones from the garden.