



The
Maastricht
city guide
with TEFAF

Index



LEON MARTENS

Fine Jewellery and Watches

Earrings in 18 karat rose gold with pearls and diamonds

JEWELLERY a.o. Leon Martens • Pomellato • Chopard WATCHES a.o. Rolex • Patek Philippe • Hublot • Omega
 Stationsstraat 39-41 Maastricht • T. +31 (0)43 325 63 63 • www.leonmartens.com

	5 — FOREWORD BY THE CHAIRMAN
	7 — FOREWORD BY THE MAYOR
	9 — FOREWORD BY THE KING'S COMMISSIONER
<i>Publisher</i> Chapeau Magazine www.chapeaumagazine.com	10 — GENERAL INFORMATION
<i>Editor in chief</i> Jo Cortenraedt	12 — TEFAF 2024 HIGHLIGHTS
<i>Editors</i> Demy Janssen, Marnix van Wijk	16 — ART & ICONS WALK WITH TEFAF
<i>Photography</i> TEFAF, Chapeau Magazine, Maastricht Marketing	22 — CULTURAL CITY PROGRAM
<i>Image editing</i> Joris Vroemen	31 — CHAPEAU/MAASTRICHT REGION STAND AT TEFAF
<i>Advertising & Sales</i> Xavier Cortenraedt, Jo Cortenraedt,	32 — MAASTRICHT RICH IN HERITAGE
Chelly Poolmans, Sabine Put	38 — NEIGHBORHOODS IN MAASTRICHT WITH THE BEST HOTELS, RESTAURANTS AND SHOPS
<i>Coordinator</i> Anouk Franssen	60 — INNOVATION IN THE PROVINCE OF LIMBURG AT BRIGHTLANDS
<i>Design</i> Miranda Reijnders	
<i>Translating</i> Vertaalburo DUO, To-vertaal	
<i>Printing</i> Moderna – Paal Beringen	
<i>Cover illustration</i> Balchasar van der Ast	
<i>A Bouquet of Flowers in a Wan-Li Porcelain Vase</i> Galery Bijl Van Urk	



RALF BERENDSEN
LA BUTTE AUX BOIS



FINE DINING | ROOMS & SUITES

www.labutteaubs.be | info@labutteaubs.be
Paalsteenlaan 90 | 3620 Lanaken | Belgium



DEAR VISITOR

We warmly welcome you to the beautiful historic city of Maastricht, home to TEFAF for almost four decades and proud of it. TEFAF is a unique experience where collectors can choose from rigorously vetted works of art, antiques, and design. Over 260 of the world's most eminent specialists will be showcasing works of great historical merit and beauty, encompassing over 7,000 years of art history, from ancient to contemporary.

TEFAF and Maastricht have a close and dynamic relationship that has touched and inspired visitors worldwide. TEFAF was founded as an annual meeting place for art dealers, and today, these distinguished experts present a world-class fair that celebrates the diversity of cultures that converge in this city. Maastricht is a city that is constantly evolving and growing, as is TEFAF, and is situated at the crossroads of a major European cultural area.

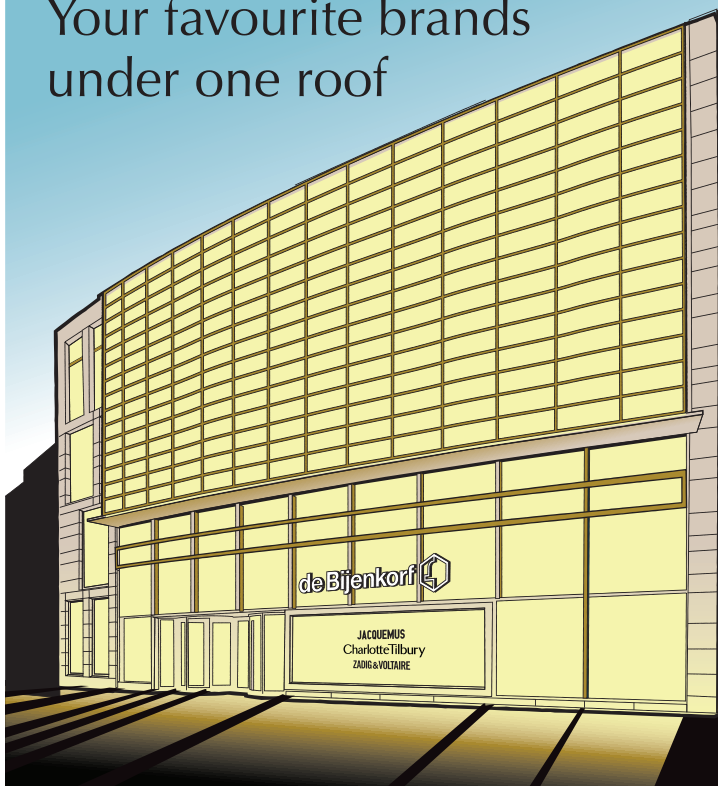
Whether it is your first time attending or you are a seasoned TEFAF enthusiast, we assure you that it will be an exceptional journey of discovery. The interplay of Maastricht's dynamic cultural life and TEFAF have made the city a must-visit destination for art enthusiasts and travellers alike.

We want to express our sincere gratitude to the city of Maastricht and the MECC for their collaboration and support, and to the many businesses and partners in the city who help making TEFAF such a unique experience. We hope you enjoy TEFAF Maastricht 2024!

Hidde van Seggelen

President, Executive Committee

Your favourite brands under one roof



In the historic city center of Maastricht, you'll find the beating fashion heart of southern Limburg. De Bijenkorf offers you an abundance of inspiration and luxury, combined with warm, personal service and classic Limburg hospitality.

Embrace the extraordinary and discover the most beautiful pieces and newest collections your favourite brands have to offer in one unique location.

De Bijenkorf Maastricht is also the ultimate destination for exclusive brands such as **Jacquemus, Moncler, Polo Ralph Lauren, Zadig & Voltaire, Charlotte Tilbury, Baobab** and more.

de Bijenkorf 

Achter het Vleeshuis 26, Maastricht | deBijenkorf.nl/maastricht



WELKOM IN MAASTRICHT!

One week each year, Maastricht can rightfully claim the title of “Global City of Art”. We owe this great honour to The European Fine Art Fair (TEFAF). As the newly appointed mayor of Maastricht, this is my first time experiencing TEFAF in this role and I am particularly excited about it. TEFAF has had a long-standing connection with Maastricht, and rightly so. Maastricht is a splendid city with a history spanning over 2000 years. Its rich history is reflected in its architecture and its people.

The world's largest and most famous art fair was born and raised in Maastricht. Besides the high-quality art, the event's international nature is an essential ingredient of its success. And Maastricht just happens to tick that cosmopolitan box. Located in the heart of the Meuse-Rhine Euroregion, we are in an area of Western Europe that brings together three nationalities and almost four million inhabitants. In this striking Euroregion, two major cultures – Germanic and Latin – have rubbed shoulders for centuries. The people and businesses who call this part of the world home inherently have a global outlook.

Even in this modern age, it is culture that unites us. Without culture, today's Euro-regional partnership would never have flourished. As a cultural highlight, TEFAF makes an essential contribution to this.

This is why we look forward to meeting the many exhibitors and visitors from all over the world, every single year. We would like to extend a very warm welcome to you all.

Wim Hillenaar

Mayor of Maastricht



ADDING VALUE

“Everything you can imagine is real.” These famous words of Pablo Picasso have not yet lost any of their relevance.

Not only as the King's Commissioner to the Dutch Province of Limburg – proud host of TEFAF once again – but also as a father, grandfather, husband and friend, I see how people are dealing with the reality of everyday life, each in their own way. In a world that seems to be changing more rapidly than ever before, finding and securing your place in a society that we have to build and maintain together, is not always an easy task.

Eighty years ago, Limburg was the first province to be freed from the terrors of war. Now, in 2024, the way we personally perceive and explore the boundaries of our freedoms – regained so long ago – can also have an ugly side. ‘Doing what you want’, while essentially a great virtue, loses some of its shine when it leads to disconnection or, worse, interfering with or curbing the freedoms of others.

Let us not forget the people standing next to us. Your neighbour might surprise and inspire you. I do not think that getting everything out of life is the pinnacle of success: adding something of value to the lives of others should be much more aspirable.

Something real or, remembering the words of Picasso, something that leaves so many things to the imagination. Adding value to the lives of others is core business for the artists whose work is on display in Maastricht during TEFAF. Gasp, wonder, listen, interact and inspire. You are not alone. Enjoy your visit to TEFAF!

Emile Roemer

Governor / King's Commissioner to the Province of Limburg

ALWAYS UP TO
70% DISCOUNT

AT YOUR FAVOURITE BRANDS

SHOP THE
UNEXPECTED

DestinationJOY

McArthur
Glen

Designer Outlet

Roermond

Discover brands like
Valentino, Coach, Burberry and more.

[DesignerOutletRoermond.com](https://www.DesignerOutletRoermond.com)

Practical Information

Maastricht

SHOP OPENING HOURS

Monday 12:00 - 18:00
 Tuesday Friday 10:00 - 18:00*
 Saturday 10:00 - 18:00
 Sunday 12:00 - 17:00
 *Thursday until 21:00

EMERGENCIES

In case of an emergency, dial 112.

AIRPORTS

Maastricht Aachen Airport 10 km,
 20 minutes from Maastricht. Direct
 flights to several cities in Southern
 Europe A popular airport for private jets.

Airport Operations:
 Vliegveldweg 90, Maastricht Airport (NL)
 +31 (0)43 3589750 ooperations@mhs.nl

Eindhoven Airport 100 km/60
 minutes from Maastricht.

Amsterdam Schiphol Airport

220 km/2 hours and 30
 minutes from Maastricht.

Düsseldorf Airport

100 km/1 hour and 10
 minutes from Maastricht.

Cologne-Bonn Airport

100 km/1 hour and 10
 minutes from Maastricht.

Frankfurt Am Main Airport

280 km/3 hours from Maastricht.

Brussels Zaventem Airport

100 km/1 hour from Maastricht.

Brussels South – Charleroi Airport

120 km/1 hours and 10
 minutes from Maastricht.

TRAIN

Maastricht-Centraal for the
 city and Maastricht-Randwyck
 for MECC-TEFAF.

Information on Dutch train- and
 bus schedules: www.9292ov.nl.

Information on national and international
 train schedules: www.ns.nl and
www.ninternational.nl.

TAXI SERVICES

Taxi Frenske +31 (0)43 3636362
www.taxi-frenske.nl

Taxi Airport Services Maestax
 +31 (0)43 3650600 www.maestax.nl

BUS SERVICES

Jacobsbus +31 (0)43 6013877
www.jacobs-travel.com

OVERNIGHT STAY IN MAASTRICHT

For hotels, apartments and B&B
www.visitmaastricht.com/
overnight-stays/hotels

Fair Information

GENERAL ADMISSION TICKET PRICES

Online tickets
 €70 Entrance ticket weekend
 (valid once between 9 - 14 March)
 €45 Entrance ticket weekdays
 (valid once between 11 - 14 March)
 €140 Multiple entrance ticket
 (valid 9 - 14 March)
 €20 Student
 (valid once between 11-14 March)
 €20 Accompanied child, age 12 - 18
 (valid once between 9 - 14 March)
 Free - Accompanied child under age 12
 Tickets purchased at the MECC
 €75 Entrance ticket weekend
 (valid once between 9 - 14 March)
 €50 Entrance ticket weekdays
 (valid once between 11 - 14 March)
 €150 Multiple entrance ticket
 (valid 9 - 14 March)
 €25 Student
 (valid once between 11 - 14 March)
 €20 Accompanied child, age 12 - 18
 (valid once between 9 - 14 March)
 Free Accompanied child under age 12
 Please note that all sales include VAT

LEAD PARTNER

AXA XL

MAASTRICHT EMBRACES TEFAF

There will be a range of cultural
 events and special activities in
 Maastricht during TEFAF.

For more information, please contact the
 Maastricht Store on +31 (0)43 3252121
 or visit www.MaastrichtxTEFAF.com

VENUE

Maastricht Exhibition
 and Congress Centre (MECC)
 Forum 100
 6229 GV Maastricht
 +31 (0)43 3838383
www.mecc.nl

THE FAIR IS ORGANIZED BY

The European Fine
 Art Foundation (TEFAF)
 Dijkshofplantsoen 14
 1077 BL Amsterdam
 The Netherlands
 +31 (0)20 303 6400
info@tefaf.com
www.tefaf.com

OPENING HOURS

March 9 - 14
 Every day 11AM - 7PM

CLOAKROOM POLICY

Please be aware of the
 strict cloakroom policy: coats,
 umbrellas, large bags and suitcases
 are not allowed to enter the fair
 (cloakroom and lockers available).

TEFAF Maastricht HIGHLIGHTS

Collectors of art, design, and antiques can once again look forward to an inspiring journey of discovery at TEFAF Maastricht 2024 – the place to come face to face with works of great historical value and beauty, covering 7,000 years of art history. The pre-eminent fair presents the opportunity to browse and select the finest, rigorously checked works of art presented by more than 270 of the world's leading specialists.



**M.S. Rau: Fine Art,
Antiques and Jewels**

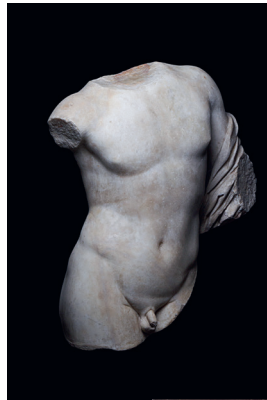
Tête De Paysanne À La Coiffe Blanche
 Vincent van Gogh
 Ca. 1884, oil on canvas
 laid down on panel.

**M.S. Rau: Fine Art,
Antiques and Jewels**

Le carnaval du sage
 (The Sage's Carnival)
 René Magritte
 1947, oil on canvas.

Tim Van Laere Gallery

Rauch
 Franz West
 2008, papier-mâché, acrylic paint,
 metal, wood, artist pedestal.



Gallery Flore

Montelupo wine-cooler
 Possibly Bandini workshop
 Ca. 1570, ceramic.

Galerie Brimo de Laroussilhe

*Part of the predella of the polyptych
 from the church of San Giorgio a Ruballa:
 Saint Lucy and Saint Catherine of
 Alexandria, Florence, 1348.*
 Bernardo Daddi
 1348, tempera on wood panel.

Kunstkammer Georg Laue

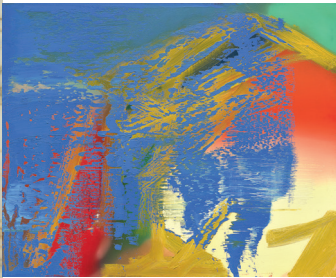
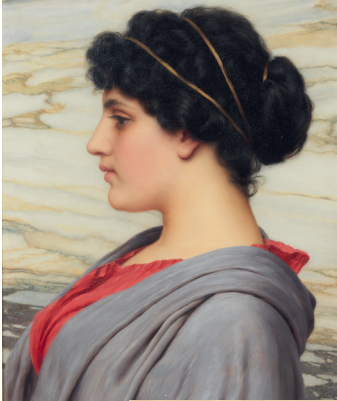
Courtly tankard,
 Circle of Danzig or Berlin
 Daniel Vading
 Ca. 1670, ivory, turned and carved;
 in the lid: ivory relief on selenite,
 mount: silver, pierced and engraved.

Galerie Chenel

Torso of Dionysus
 Roman, 2nd Century AD, Marble.

The Weiss Gallery

Henri IV of France (1533 - 1610)
 Frans Pourbus II
 1610, oil on canvas.



Galerie von Vertes

Abstraktes Bild

Gerhard Richter

1980, oil on canvas.



Berardi Galleria d'Arte

Perilla (1911)

John William Godward

1911, oil on canvas.

Agnews Gallery

*Femme nue s'appuyant
sur l'avant-bras gauche*

Amedeo Modigliani

Ca. 1910, pencil on wove paper.



Artur Ramon Art

Oblong Table

Martin-Guillaume Biennais

Late 18th Century, Moulded,
chased, and gilded bronze with
an inlaid French scagliola top.



Gallery Tanakaya

Kamisuki (Combing the Hair)

Torii Kotondo

1933, Shin-Hanga woodblock print.

The art objects featured in this article have not undergone formal vetting by TEFAF. The organisation assumes no responsibility for inaccuracies, misrepresentations, or omissions in the information provided about these art objects.



the Future
of Wellness
is now



INDOOR & OUTDOOR POOLS - JACUZZIS - 10 SAUNAS - HAMMAM - TEMAZCAL
MEDITATION, WORKSHOP & RELAX ROOMS - CEREMONIES & RITUALS
CRYOTHERAPY - MASSAGES, SKIN & BODYCARE - HOLISTIC TREATMENTS
RETREATS - WELLNESS PACKAGES - LIVE MUSIC - RESTAURANT - CRYSTAL SHOP

Nationaal Parklaan 7 - 3650 Dilsen-Stokkem (B)
+32 (0)89 39 09 96 - www.elaisawellness.com

Art & Icons walk with TEFAF

Maastricht has a rich history, which is embellished by innumerable art treasures and architectural gems. The Arts & Icons Walk with TEFAF will take you along a number of well-known as well as lesser-known works of art and unique locations. Although you can start this walk at any of the points of interest in this brochure, it officially starts – how else – at MECC Maastricht, TEFAF's venue.

1. VERTICAL ELEMENTS

Forum 100

Five vertical elements, executed in bronze, have been erected in front of the entrance to the Maastricht Exhibition & Conference Centre. This work by Piet Killaars dates from 1988.

2. PROVINCIAL

GOVERNMENT BUILDING

Treaty of Maastricht, Limburglaan 10
 The Provincial Government Building houses a permanent exhibition about The Treaty of Maastricht (1992), one of the most significant treaties in the history of Europe. www.limburg.nl

3. STARS OF EUROPE

Avenue Ceramique 300

Stars of Europe was commissioned in 2001 in honour of the ten-year anniversary of the Treaty of Maastricht.



4. BONNEFANTEN

Avenue Ceramique 250

The Bonnefanten museum rises to greet you along the Meuse. Designed by the famous Italian architect Aldo Rossi, the museum is composed of three separate structures, of which the central one gives way to a cylindrical building. www.bonnefanten.nl

5. CENTRE CÉRAMIQUE

Avenue Ceramique 50

Maastricht's iconic public library was completed in 1999. The architect of this building, which was beloved by both locals and tourists from the outset, was Jo Coenen. Centre Céramique is partly redesigned and transformed into a museum dedicated to Maastricht's multifaceted history. www.centreceramique.nl

6. HELPOORT MUSEUM

Sint Bernardusstraat 24b

The Helpoort (Hell's Gate) is the oldest city gate in the Netherlands, and the only one still standing in Maastricht. It was built in April 1229 subject to the consent of Henry I, Duke of Brabant. www.vestingmuseummaastricht.nl

7. LIMBURG REGIONAL HISTORIC CENTRE 'CRACK IN THE WALL'

Sint Pieterstraat 7

It is simply impossible to ignore the gigantic 'crack in the wall' in the listed building that houses the Limburg Regional Historic Centre. www.rhcl.nl

8. STATUE OF D'ARTAGNAN

Aldenhofpark 4-5

D'Artagnan met his death at Maastricht's Tongeren Gate on 25 June 1673 during a bloody battle between the French and Staatse (Government) troops. A bronze statue was erected in 1977 to mark the spot where this legendary captain of the musketeers was killed. The statue was designed by sculptor Alexander Taratynov.

9. PASSAGEWAY OF WISDOM

Grote Looierstraat 17

Artist Borek Sipek (1949-2016) was commissioned by the Art and Heritage Committee of Maastricht University to create this Passageway to Wisdom.

10. MUSEUM OF NATURAL HISTORY

De Bosquetplein 7

The Natural History Museum of Maastricht is located in the former Convent of the Grey Franciscan Sisters in the Jekerkwartier district. The museum is renowned for a collection of fossils that is unique in the Netherlands. www.nhmmaastricht.nl

11. JAN VAN EYCK ACADEMY

Academieplein 1

The Jan van Eyck Academy is an international post-academic institute for the visual arts. The institute is located in a listed building designed by architect Frits Peutz and was built between 1958 and 1961. www.janvaneyck.nl

12. MUSEUM OF PHOTOGRAPHY

Vrijthof 18

Fotomuseum aan het Vrijthof is a privately owned photography museum located in the centre of Maastricht. The museum is housed in what was formerly known as the Spanish Government Building. The museum boasts a special TEFAF room, a gift from the art fair bearing the same name. www.fotomuseumaanhetvrijthof.nl

13. TREASURY OF SAINT SERVATIUS

Basilica Saint Servatius
Keizer Karelplein 3

The shrine of St. Servatius (also called the 'Noodkist') contains the relics of the Netherlands' first bishop. It is an exceptionally fine example of the Maasland goldsmiths' art. www.sintservaas.nl

14. THEATRE AAN HET VRIJTHOF

Vrijthof 47

From a palatine (non-defendable royal residence) to a convent to a city palace to a theatre: that is the history of this prominent building on Vrijthof square in a nutshell. www.theateraanhelvrijthof.nl

15. MARRES, HOUSE OF CONTEMPORARY CULTURE

Capucijnenstraat 98

Housed in a historic residential building in the centre of Maastricht, the mission of Marres is to explore contemporary art in the broadest sense of the word. www.marres.org

16. DOMINICANEN BOOKSHOP

Dominicanenkerkstraat 1

The unique Dominican Bookshop has been housed in the age-old Dominican church ever since the autumn of 2006. www.libris.nl/dominicanen

17. THE SPHINX PASSAGE

Sphinxcour

The Sphinxpassage is a 120-metre-long covered tiled passageway that runs from the Eiffel Building to the Pathé cinema. Nearly 30,000 tiles bring to life the history of Sphinx together with words, images, and objects. www.sphinxkwartier.nl

18. BUREAU EUROPA

Boschstraat 9

Bureau Europa is a platform for architecture and design that organizes exhibitions as well as lectures, workshops, city tours, and innumerable activities focusing on architecture, urban development, and design. www.bureau-europa.nl

19. MUZIEKGIETERIJ

Boschstraat 5

Muziekgieterij is one of the Netherlands' youngest pop music venues. Founded in 2004, this venue has grown into one of the foremost cultural hotspots of Maastricht and the Euregion in less than two decades. www.muziekgieterij.nl

20. LUMIÈRE CINEMA

Bassin 88

The Lumière cinema has been housed in this beautiful building in the Sphinx quarter. The listed building was built in 1910 to serve as the power plant for the old Sphinx factories. www.lumiere.nl

21. STATUE OF MINCKELERS

Markt square

Maastricht-born Jan Pieter Minckelers was the inventor of gas lighting. A statue created by Bart van Hove was erected in memory of him on Markt square.

22. CITY HALL

Markt square 78

The City Hall on Markt square was constructed between 1659 and 1664 under the guidance of master architect Pieter Post. Its tower dates from 1684 and contains a carillon with 49 bells that is still regularly played.

23. HET DINGHUIS

Kleine Staat 1

The Maastricht Visitor Center is located in the Dinghuis, a building that carries a long history with it. The building dates from 1470. www.bezoekmaastricht.nl

24. ONZE LIEVE VROUWE BASILIEK

OLV Plein 7

In the 5th century, a church had been already erected on the spot where the Basilica of Our Lady stands today. This was probably the oldest Christian church in the Netherlands. The basilica is a splendid example of Roman architecture and contains various works of art of an exceptional quality.

25. ROMAN CELLAR, HOTEL DERLON

OLV Plein 6

The Derlon Hotel is located on Onze Lieve Vrouweplein. In this cosy museum cellar, Maastricht in the Roman Era lies literally at your feet, thanks to the extensive collection of archaeological artefacts on display here.



Dominicanen bookshop ©Hugo Thomassen

26. AMAZON ON HORSEBACK

Op de Thermen

A small man who makes big statues, artist Arthur Spronken (1930-2018) is considered the founding father of the Limburg sculptors.

27. MESTREECHTER GEIS

Het Bat

This character of the archetypal resident of Maastricht has been captured in the bronze statue Mestreechter Geis, as a certain nonchalance, Weltschmerz, or laissez-faire. The statue was made by the Haarlem-born artist Mari Andriessen.

28. SAINT SERVATIUS BRIDGE

The oldest bridge in the Netherlands may have been rebuilt several times, as well as renovated, bombed, and even blown up but its very core has always been preserved.

29. MAASTRICHT RAILWAY STATION

Stationsplein 27

The Maastricht Railway Station was restored to its former glory at the end of 2021 after a renovation that lasted two and a half year. It was designed by George van Heukelom and opened in 1916.



Aerial view
of Maastricht
city center
by MAA

Framing the most beautiful views

When you visit Maastricht Aachen Airport, you visit Limburg. A province full of beautiful pearls. Full of sights and an endless list of things to do. Such as Tefaf. Start your art journey at Maastricht Aachen Airport. Visit our special airport exhibition 'Kunst van Dee'. Free accessible in our beautiful passenger terminal.

maa.nl

Maastricht Aachen Airport. **My airport**



THIS COULD BE YOUR PRIVATE GUESTHOUSE DURING TEFAF

Get to know our exclusive range of unique holiday homes and enhance your TEFAF experience with a tranquil stay in the area of Maastricht.

Visit our website:

www.beaujean-vacances.com



Cultural City Program

09.03.2024 - 14.03.2024

During the 37th edition of The European Fine Art Fair (TEFAF) at the MECC Maastricht, a special cultural program will be organised in the city. All the information can be found at www.maastrichtxtefaf.com



Schrittmacher Festival.
 Botis Sevan, Mama Camilla Greenwell.

EXHIBITIONS

Isaac Julien:

What Freedom Is To Me

Location _ Bonnefanten

9 March until 18 August 2024

Isaac Julien, born in London in 1960, is a pioneering figure in video and installation art since the early 80s. His impressive installations integrate film, photography, performance, music, and painting, using aesthetics, poetry, movement, and music as communicative tools. www.bonnefanten.nl

Shinkichi Tajiri:

The Restless Wanderer

Location _ Bonnefanten

Until 12 May 2024

'Shinkichi Tajiri: The Restless Wanderer' is organized to commemorate the 100th birthday of the Japanese-American artist Shinkichi Tajiri. Curated by his grandchildren Tanéa and Shakuru, the exhibition takes visitors through Tajiri's eventful life. www.bonnefanten.nl

Arturo Kameya 'Opaque Spirits'

Location _ Marres,

House for Contemporary Culture

7 March until 26 May 2024

Arturo Kameya and Claudia Martínez Garay create an intriguing exhibition at Marres. The duo transforms the building into a ghostly hotel, where the spirits of the failing Peruvian state have taken residence. The facade reveals enormous paintings with contemporary messianic images, while the interior unveils bizarre scenes, such as a tiled bathhouse disguised as a restaurant or a multi-armed beer fountain. www.marres.org

In Vitro, the Many Lives of Glass

Location _ Bureau Europa

Until 16 June 2024

'In Vitro, the Many Lives of Glass' highlights the diversity of glass in architecture, from traditional craftsmanship to modern innovations. Historically, it symbolizes stories in church windows and speaks today about health, privacy, and nature. Limburg has a long history of working with glass, including traditional stained glass windows and modern architecture. www.bureau-europa.nl



Shakuru Shinkichi and Tanea Tajiri.
 ©Kim-Zwarts

Humberto Tan:

Tomorrow Will Be Better

Location _ Fotomuseum aan het Vrijthof

Until 17 March 2024

Humberto Tan, known as a presenter, journalist, writer, and photographer, showcases an admirable collection of impressive close-up portraits, photos of hands and interiors of one hundred centenarians in 'Tomorrow Will Be Better.' www.fotomuseumaanhetcvrijthof.nl

Maastricht 1673

The Sun King Conquers the City

Location _ Maastricht Museum

Until 31 March 2024

The exhibition marks the 350th anniversary of the siege and conquest of Maastricht by Louis XIV in 1673. The exhibition reveals hidden stories from this crucial period in European, Dutch, and Maastricht history. Top pieces include a newly discovered map by John Scott, detailing the Sun King's camp and the location where d'Artagnan died. www.maastrichtmuseum.nl

CONCERT / MUSICAL Jekerjazz Maastricht celebrates TEFAF

Location _ Various venues
11, 12 & 13 March 2024

Jekerjazz Maastricht celebrates Tefaf with a vibrant music program. Enjoy a diverse mix of concerts in the heart of the city featuring jazz, funk, salsa, bossanova, pop, blues, and more. Prominent musicians such as Hans Dulfer, the Moses Rosenberg trio, Flamp with Bart Oostindie, Arno Adams, Paulus Schafer, Dominique Paats, and others will perform during these days. Immerse yourself in an unforgettable musical experience during Tefaf, where diversity and culture converge in the sounds of Jekerjazz. www.jekerjazz.com

Jesus Christ Superstar

Location _ Theater aan het Vrijthof
7, 8, 9 & 10 March 2024

Jesus Christ Superstar is a unique theatre experience that prompts contemplation. Directed by Ivo van Hove, the musical features a star-studded cast, including Jeangu Macrooy, Lucas Hamming, Edwin Jonker, Alex Klaasen, and Magtel de Laat. The rock musical, entirely in English, uses the unforgettable lyrics and music of Tim Rice and Andrew Lloyd Webber. It is a performance about change, worship, betrayal, power and rebellion, but above all, a story of hope. www.theateraanhenvrijthof.nl

Dutch Classical Talent Georgia Burashko (mezzo-soprano)

Location _ Theater aan het Vrijthof
10 March 2024

In 'Beauty Awake,' Canadian mezzo-soprano Georgia Burashko explores the essence of life: from childhood, love, heartbreak, and eternity. It comprises a versatile selection of English songs from the Elizabethan Renaissance to the High Baroque, including contemporary compositions by Danika Lorèn, Dolly Parton, and the Dutch Karmit Fadael. Accompanied by a flexible ensemble of two violas and a lute. Among the laureates of Dutch Classical Talent are many renowned names, including Tania Kross, Lavinia Meijer, Nora Fischer, Van Baerle Trio, and the Berlage Saxophone Quartet. www.theateraanhenvrijthof.nl

EVENTS

Maastricht Antiquarian Book & Print Fair

Location _ St John's church
8 until 10 March 2024

The Maastricht Antiquarian Book & Print Fair is a true treasure trove for enthusiasts of books, maps, and prints. As the largest fair in the Benelux, thirty renowned antiquarians from both home and abroad showcase their most valuable discoveries. The fair caters not only to collectors of illuminated manuscripts but also to the modest book lover and the reader with an affinity for magazines. www.mabp.eu



Crucifix Jan van Steffeswert, Bonnelanten.

Heritage Unlocked

Location _ Various locations
12 March 2024

During 'Heritage Unlocked,' five iconic historical buildings in Maastricht will open their doors to the public. These are the landmarks: Sint Servatius Basilica, the St John's church, the Dominican church, the Dinghuis, and City Hall. Accompanied by Official Maastricht Guides, you will explore the city and uncover captivating stories about these unique monuments. www.visitmaastricht.com/maastrichtembracestefaf

Art in the Shop Window Maastricht Embraces TEFAF

Location _ Various venues
9 until 14 March 2024

This year, businesses in the centre of Maastricht embrace TEFAF, bringing the world's largest, prestigious art fair to life. Entrepreneurs transform their shop windows into true works of art. Stroll through the streets and admire. Together, we celebrate the art of wonder through a remarkable TEFAF shop window route. www.visitmaastricht.com/maastrichtembracestefaf

Emerging Artists Unveiled: Maastricht Galleries Showcase Rising Stars during TEFAF

Location _ Various Galleries
7 until 14 March 2024

A dozen Maastricht galleries are providing a platform for local and young talents (up to 27 years old) during TEFAF. These talents applied through an Open Call distributed via the art academy, Jan van Eijck Academy, and the Collaborative Studios Maastricht (SAM). A professional jury has selected a presentation from all the applications. Each participating gallery will organize a special event with these talents during TEFAF and be open throughout the duration of the art fair. www.visitmaastricht.com/maastrichtembracestefaf

The SRAL Restoration Consultation. Discover the Stories Behind Your Art

Location _ Rob van Rijn Kunsthandel
Galerie and Artichoque Art Gallery
9 until 12 March 2024

Uncover the stories behind your artworks during the SRAL Restoration Consultation at Rob van Rijn & Artichoque Art Gallery. Have you found forgotten treasures in the attic or family portraits affected by the ravages of time? Bring your artwork to the consultation, where experienced SRAL experts will assess the condition and discuss restoration possibilities. www.visitmaastricht.com/maastrichtembracestefaf



Arturo Kameyda Opaque Spirits.
Marrés, House of Contemporary Culture

Heritage Walk: The Maastricht of JAN

Location _ Starting point

is Helpoort Maastricht

10 and 12 March 2024

During this walk, you will be taken through Maastricht on the traces of Jan van Steffeswert. Where did he work? Who were his clients? How did he obtain his materials? These questions, along with aspects of sculpture restoration, will be discussed during the walk. In Maastricht around 1500, numerous artists and craftsmen were active. One of them was the renowned woodcarver Jan van Steffeswert. He executed commissions for many churches and sextons in Maastricht, and his craftsmanship was appreciated beyond the city walls.

www.visitmaastricht.com/maastrichtembracestefaf

REGION

Schrit_tmacher Festival 2024

Location _ Aachen, Heerlen,

Kerkrade, and Eupen

20 February until 24 March 2024

Schrit_tmacher's 29th dance and culture festival brings together leading companies from New Zealand, France, China, the US, Great Britain, Senegal, Germany, Wales, Belgium, and the Netherlands. www.schrittmacherfestival.nl



Jesus Christ Superstar.
Theater aan het Vrijthof Maastricht.
©Jan-versweyeld

Exhibition Kunstdepot

Location _ SCHUNCK, Heerlen

Until 31 March 2024

The first exhibition in the Kunstdepot highlights the art of attentive observation. Artworks from the SCHUNCK collection vary greatly at first glance but share the fascinating characteristic that there is more to discover than initially meets the eye. www.schunck.nl

Between Graveyard and Museum's Sphere

Location _ Het Nieuwe Domein,

Sittard-Geleen

3 February until 30 June 2024

In 'Between Graveyard and Museum's Sphere,' Joseph Sassoon Semah connects seemingly unrelated locations such as a graveyard and a museum hall. He takes visitors on an intriguing journey from the Temple of Solomon in Jerusalem to the lost public space of Baghdad, his grandfather's waiting room, and Auschwitz-Birkenau. www.hetnieuwedomein.nl



SRAL Paintings Department.
©SRAL

Antiquity in Colour.
Gallo-Roman Museum.

Humberto Tan.
Tomorrow Will Be Better.
©Humberto-Tan

Bill Viola – Sculptor of Time

Location _ Parc de la Boverie, Liège

Until 28 April 2024

The first Belgian retrospective exhibition of the internationally acclaimed video artist Bill Viola offers a unique experience. His technically stunning and deeply human work, infused with universal humanism, encompasses eighteen major works from the past thirty years. Themes such as transition, ritual, the relationship with the afterlife, life and death, water, and metamorphosis form a common thread. www.expo-billyviola.be

Home advantage. Flemish painting at home in Aachen

Location _ Suermondt-

Ludwig-Museum, Aachen

Until 14 April 2024

In the early modern period in the Burgundian Netherlands, now the Benelux countries, painters like Jan Van Eyck, Hans Memling, and Joos van Cleve were influential throughout Europe. The Suermondt Ludwig Museum in Aachen houses more than fifty paintings from the 15th and 16th centuries, with a focus on Old Flemish art. www.suermondt-ludwig-museum.de



Antiquity in Colour

Location _ Gallo-Roman Museum,

Tongeren, Until 2 June 2024

In 'Antiquity in Colour,' it is revealed that the white marble statues from classical antiquity were originally vividly painted. German archaeologists, Prof. Dr. Vinzenz Brinkmann and Dr. Ulrike Koch-Brinkmann, present dozens of life-size and authentic reconstructions of emperors, gods, and mythological figures. www.galloromcinsmuseum.be

The must-see of the year!

A stone's throw away from TEFAF is one of the top art museums in the Netherlands: Bonnefanten. It is home to magnificent old masters, medieval carvings, Maastricht Silver, cutting-edge contemporary art, and unique temporary exhibitions by extraordinary international artists. Of course, you will also find a nice museum café and a surprising museum shop to explore.

Must see! Isaac Julien, *What Freedom Is To Me*

A premiere! For the first time in the Netherlands, a major retrospective of British filmmaker, artist and pioneer Isaac Julien (London, 1960) is on view. Julien has been making impressive installations that unite the medium of film with photography, performance, music, and painting since the early 1980s. From his earliest work *Who Killed Colin Roach?* (1983) to his latest overwhelming cinematic *Once Again... (Statues Never Die)* (2022), Julien constantly pushes the boundaries of film as an art form. Leading newspapers have already tipped the exhibition as a must-see this year!

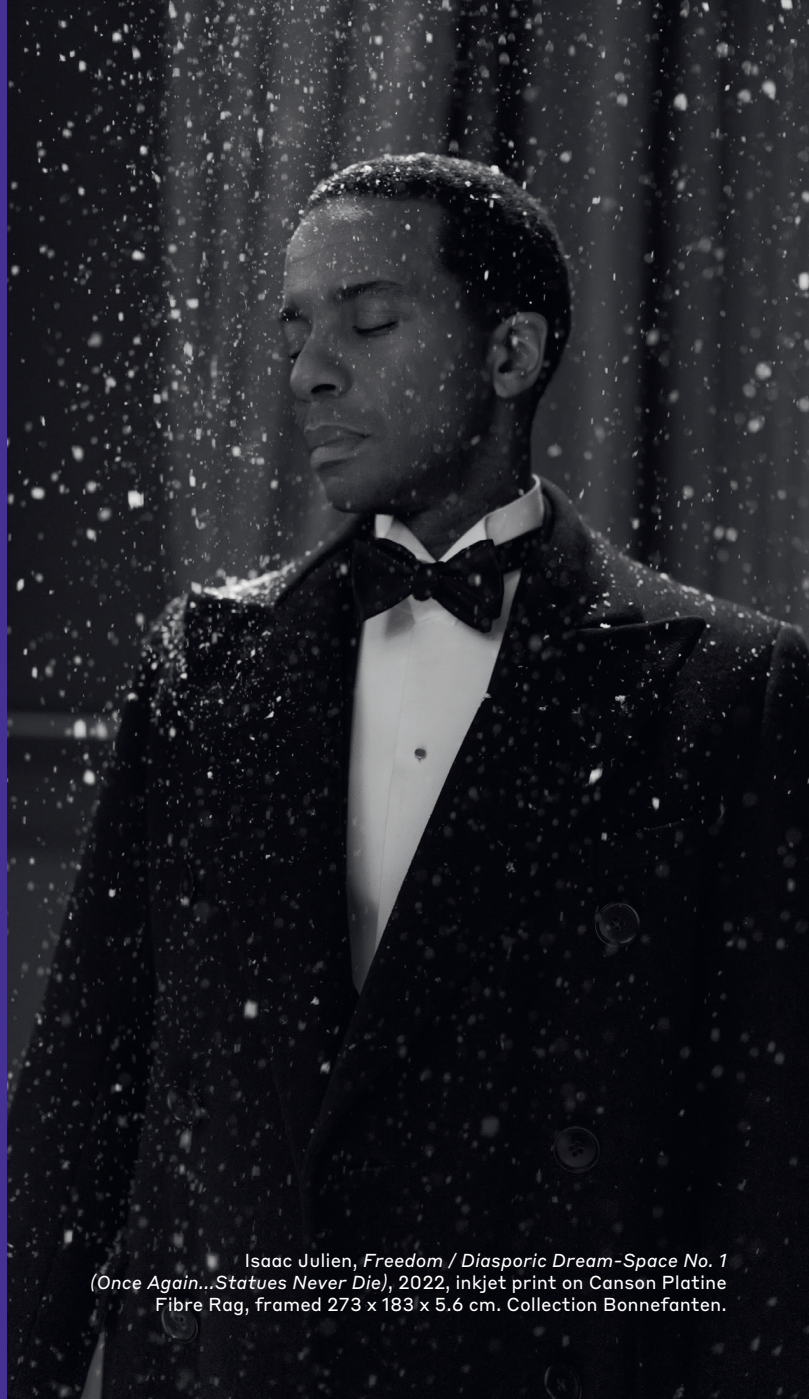
March 8: Bonnefanten Free Friday

Our doors will open from 8 pm to 11 pm on Friday night, 8 March. Free for everyone! You can join us for a fantastic Free Art Night at the museum, with music, performances, workshops and more. See you there!

For more information www.bonnefanten.nl

BONNEFANTEN 

There is more than meets the eye.



Isaac Julien, *Freedom / Diasporic Dream-Space No. 1*
(*Once Again... Statues Never Die*), 2022, inkjet print on Canson Platine
Fibre Rag, framed 273 x 183 x 5.6 cm. Collection Bonnefanten.

EMIG

To dream,
experience and
enjoy together

eventmanagementgroep.nl

Chapeau/ Maastricht Region

This year, the Chapeau / Maastricht Region booth in TEFAF's business area (stand # 811) will again be designed by Bonnefanten Museum Maastricht, focussing on works of the artists Isaac Julien and Shinkichi Tajiri, who are on display at the museum. The Chapeau/Maastricht Region stand is a meeting place initiated by Chapeau Magazine, the Municipality of Maastricht, the Province of Limburg, Brightlands, Maastricht University, MECC Maastricht, and a number of other partners from the region. Its aim is to strengthen the link between TEFAF and the Maastricht-Limburg region.

The stand is located in the Expo Foyer upstairs, directly accessible from the fair on the ground floor. The entire Foyer will be furnished as business lounges and restaurants, complete with a spacious, central terrace.

And just like years gone by, the stand will feature a small TV studio to film the daily programme 'TEFAF TV by Chapeau'. The programme will be broadcast live at hotels in Maastricht as well as online at www.tefafnews.com and www.chapeaumagazine.com.

31

MAASTRICHT CITY GUIDE 2024
TEFAF Chapeau stand



Maastricht rich in heritage

The city of Maastricht has a history of more than 2000 years, and as a result, there are a lot of repurposed monuments to visit. Under the name Heritage Unlocked on Tuesday 12 March five monuments are open to the public from 18.00 – 22.00 hours (also see page 25).



General's House (Theater aan het Vrijthof)

About a thousand years ago, Maastricht was the capital of a large area, stretching to Friesland in the north of the Netherlands. This region was called Lower Lorraine. The Theater aan het Vrijthof originates from that period. In addition to the Basilica of Saint Servatius on the Vrijthof, there was also a so-called “palts”, an edifice which served as the Grand Ducal palace for two centuries. Later, it became the Convent of the White Women.

It was not until the 19th century that the General's House, again exuding palatial allure, was built at this location. General Dibbets, commander of the Maastricht garrison, purchased this residence.

At the beginning of the 20th century, the building was acquired by the municipality of Maastricht. Over the years, it served a variety of functions: a museum, a municipal archive, a library, and a police station. In 1992, it opened its doors as the Theater aan het Vrijthof.

Vrijthof 47. www.theateraanhelvrijthof.nl/en

Spanish Government Building (Photography Museum at the Vrijthof)

The “Spaans Gouvernement” on the Vrijthof is perhaps the oldest preserved residential building in Maastricht, dating back to the 14th century.

The building traces its origins to the Middle Ages as a canons house. At that time, this house was the first of the city's building as a part of the area of the Basilica of Saint Servatius.

In the 16th century it was acquired by Charles of Ghent, later to be known as Emperor Charles V and then as the King of Spain. As a consequence, the name Spanish Government has been used for centuries. In the 18th and 19th centuries it was the residence of the military governor. By the end of the 19th century, it became a bank. At the beginning of the 20th century, a branch of the Dutch Central Bank was located here. In the seventies the building was renovated and repurposed as a museum called Spaans Gouvernement. Mainly regional art and antiques, including furniture from the 18th century from Liège and Aachen, were displayed.

In 2009, it underwent extensive renovations and became the Museum aan het Vrijthof. These refurbishments included a fine hall dedicated to TEFAF in the covered courtyard, a present from the TEFAF organisation to celebrate the 25th anniversary of the art fair. It was not until 2019 that it became the Photography Museum “Fotomuseum aan het Vrijthof”.

Vrijthof 18. www.fotomuseumaanhelvrijthof.nl/en

Dominican church (bookshop)

The Dominican church, today a wonderful bookshop, is another popular place whose function has changed over time. This early gothic church, characterized by special ceiling and wall paintings, was built in the 13th century. For about five centuries it continued as a church and monastery until French troops turned it into a horse stable at the end of the 18th century. Afterwards, its functions included that of a slaughter house and bicycle parking garage.

In 2006, the architectural firm Merckx + Girod undertook major restorations, turning the structure into a bookshop. The ancient frescos were professionally restored by the Stichting Restauratie Atelier Limburg (SRAL). These unique works were almost all painted by Jan Vassens at the beginning of the 17th century. Though they couldn't be restored in full, parts of them are still clearly visible.

Dominicanerkerkstraat 1 www.libris.nl/dominicanen/about-bookshop-dominicanen

ENCI (AINSI Theatre)

The ENCI complex is now recognised as a heritage site. Nineteen twenty-four marked the establishment of the First Dutch Cement Industry (ENCI). Limestone from the St. Pietersberg provided the company valuable raw material for manufacturing cement. Impressive buildings were constructed, notably the ‘Peutzhal’ by Frits Peutz. In 2020, the factory closed for a variety of reasons, including the discontinuation of on-site limestone extraction.

Several studies are underway to determine future uses for the enormous buildings and installations, as well as for the vast grounds. Today, one of these buildings houses the AINSI Theatre, a venue for smaller productions.

Lage Kanaaldijk 113 B, intrainsitu.nl/home-en

Wiebengahal (SRAL)

The Wiebengahal, a former factory hall in the Céramique district, epitomises the so-called New Construction, an architectural style employing skeletal construction in reinforced concrete. It harkens back to district's industrial past, when a ceramics factory was located here. This hall is adjacent to the newly built Bonnefantenmuseum. The architect Jan Gerko Wiebenga designed the building in 1912. We owe it to architect Jo Coenen and the urban planner Huub Smeets that this hall wasn't demolished with other factory buildings in the area. At the moment, it is used by the Stichting Restauratie Atelier Limburg (SRAL) for the restoration of significant works of art.

Avenue Céramique 224 www.sral.nl/en

Grauwzustersklooster (Natural History Museum)

The monastery of the Grey Sisters (Grauwzustersklooster) at the De Bosquetplein is a former monastery and has accommodated the Natural History Museum Maastricht for about a century.

The grey nuns, named after their grey habits, were an order of nuns from the 14th century. Two centuries later, they

arrived in Maastricht from Belgium. Their focus was caring for the sick. By the end of the 18th century, Maastricht came under French control and all monasteries were closed. The building later became an insane asylum and then an accommodation for poor and single women.

The complex was built in the 17th century around the house 'Huis Stas'. This was done in the Mosan Renaissance style with typical decorative courses and ornamental curved gables. The museum collection consists mainly of everything nature has to offer – from stuffed birds to reptiles, the most important piece being the remains of the famous mosasaurus, nicknamed Bêr, excavated in Maastricht.

De Bosquetplein 7 www.nhmmaastricht.nl

Dinghuis (Maastricht Store)

The name says it all: people go to the Dinghuis to bargain ("afdingen" in Dutch) or for a legal ruling ("geding" in Dutch). With reference to the medieval court house located on the Kleine Staat, things become clear.

This building was first mentioned in 1399, and over the centuries not only were many structural adaptations made, but it also served a range of functions. One of them was the prestigious Burgundian Court.

For a long time, the Dinghuis was a prison. Afterwards, it served a totally different purpose – that of a theatre. Maastricht's older generation remember the puppet theatre "Poesjenellenkelder" in the Dinghuis basement. It



Dominicanen Bookstore.

was run by the famous Dutch puppeteer Pieke Dassen.

In the 1970s, after major renovations occurred, the Dutch tourist office, predecessor of Maastricht Marketing, had their central office there. In the basement of the Dinghuis is now located the Maastricht Store where you find gifts with a story made and designed by artists and makers from Maastricht.

Kleine Staat 1 www.visitmaastricht.com

Kruisherhotel

Today, the Kruisherhotel is a five-star hotel in the city centre, part of the Oostwegel Collection. Like many historical



buildings in Maastricht, it began as a monastery: the 15th century Kruisherenklooster at the Kommel.

The Gothic monastic complex served a very different purpose in the 19th and 20th centuries; namely, as a military depot. Later, the government ran an agricultural test station on the site, before it became a warehouse for opera backdrops.

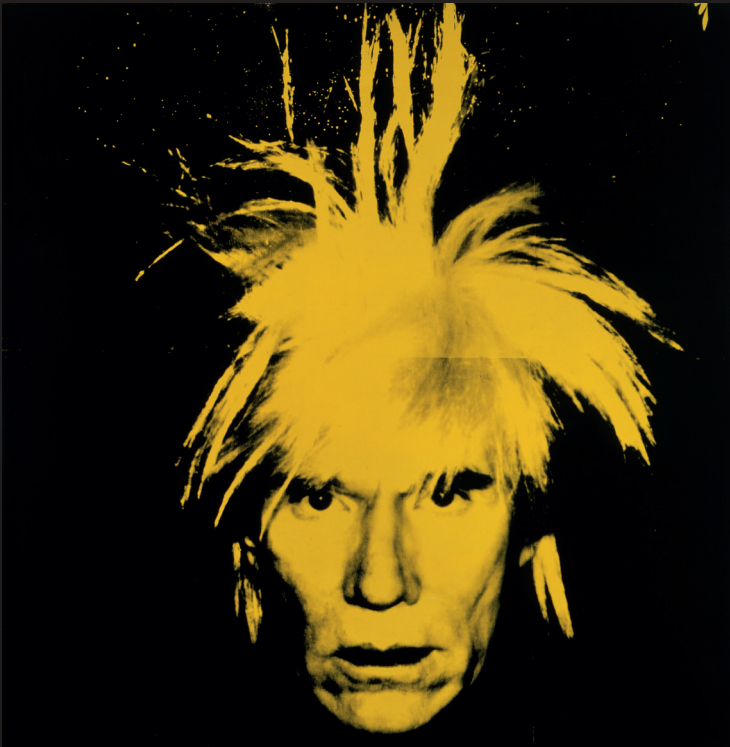
Hospitality entrepreneur Camille Oostwegel Sr. began large-scale restoration and renewal under the supervision of architect Rob Brouwers.. The lofty two-storey construction in the central nave, which accommodates an upstairs restaurant and downstairs wine bar, makes for spectacular viewing.

His choice for a modern interior in this historic building and design furniture, especially in the hotel rooms and suites, was similarly bold. However, the historic character remains intact, including the magnificent large windows and ornamental elements.

Kruisherengang 19/23
www.oostwegelcollection.nl/en/kruisherhotel-maastricht

ANDY WARHOL

Vanitas



Andy Warhol, *Self-Portrait*, 1986, acrylic and silkscreen ink on linen. The Andy Warhol Museum, Pittsburgh; Founding Collection, Contribution The Andy Warhol Foundation for the Visual Arts, Inc. 1998.1.815. © The Andy Warhol Foundation for the Visual Arts, Inc. c/o Pictoright Amsterdam 2024.

The Andy Warhol: Vanitas exhibition sheds new light on the work of iconic artist Andy Warhol, focusing on the role of religion in his life and work. The *Vanitas* exhibition shows around one hundred of the works and personal effects of one of the leading figures of the pop art movement. The exhibition is a partnership with The Andy Warhol Museum in Pittsburgh (US).

Vanitas – Latin for both ‘vanity’ and ‘transience’ – is an art form which is used to symbolise the momentariness of life, the certainty of death and a sense of meaninglessness which stems from the fleeting nature of life. This theme is the leitmotif of the exhibition. Warhol was a Byzantine Catholic by faith and attended church every Sunday with his mother. After an attempt was made on his life in 1968, his awareness of life's fragility and his religious devotion became



ever stronger, something which is likewise reflected in his work. The exhibition shows a rarely seen series of skull drawings and self-portraits of Warhol, as well as a series of skull paintings. In addition, a number of Warhol's more iconic works are on display, such as the series of screen prints *The Reversal Series* (ca. 1978) of *Marilyn Monroe* and *Death and Disaster*, including the work *White Burning Car III* (1963).

Sep 2024 to Mar 2025
Tue – Sun 11 a.m. to 5 p.m.
€ 16,- / tickets via
[schunck.nl](https://www.schunck.nl)

Andy Warhol, *Skull*, 1976, acrylic and silkscreen ink on linen. The Andy Warhol Museum, Pittsburgh; Founding collection, Contribution The Andy Warhol Foundation for the Visual Arts, Inc. 1998.1.182 © The Andy Warhol Foundation for the Visual Arts, Inc. c/o Pictoright Amsterdam 2024.



WYCK/ CÉRAMIQUE

Wyck encompasses the area between the train station and the river Meuse, and is not officially part of the city centre. However, over the last decades it has developed significantly and is seen as a kind of “little Paris.” The construction of the large streets, Wilhelminasingel and Stationsstraat, followed the French and Walloon example, wide avenues to evoke grandeur.

Exclusive shops, fashionable hotels and trendy restaurants and bars seamlessly complement authentic specialised shops and small-scale delicatessens. Wyck is vibrant, thanks in particular to the increased number of fine gastronomic venues. Compared to the commercial streets in the centre, Wyck also offers ample residences, making for a lively community ambiance. The main artery is the Stationsstraat, which turns into the Wycker Brugstraat as one approaches the Meuse. Don't forget to venture down quieter side streets as they are definitely worth a stroll. Look up and discover the many beautiful historic facades and facing bricks. For shopping and browsing the go-to street is the Rechtstraat.

For convenience, the new Céramique district is allotted to Wyck, an area where the ceramics industry was formerly located. This section is not characterised by narrow, authentic streets, but rather by modern, architectural highlights, including the remarkable Bonnefanten Museum designed by Aldo Rossi. The past and the present come together beautifully in this neighbourhood. The Centre Céramique, developed by architect Jo Coenen, offers a thriving location for the arts, a public library, and a meeting place for lectures, events, or simply good coffee.

RESTAURANTS

STUDIO

Cosy Michelin-starred restaurant. Patron-cuisinier Gilbert von Berg likes to experiment with out-of-the-ordinary cooking techniques, such as fermentation, creating pronounced flavours.

Wycker Grachtstraat 24,
+31 (0)6 46027252
www.studio.restaurant

BELUGA LOVES YOU

Michelin star restaurant by Servais Tielman. Contemporary kitchen using pure and local ingredients in a modern interior.

Plein 1992 12, +31 (0)43 3213364
www.belugalovesyou.com

MEDITERRANEO

Best and most famous Italian restaurant in Maastricht. After patron Pino passed away, the kitchen staff trained by him is continuing in his style.

Rechtstraat 73, +31 (0)43 3255037
www.ristorante-mediterraneo.nl

HARRY'S

Elegant and stylish bistro, where the chef combines traditional influences with home grown vegetables. Large selection of good and affordable wines.

Wycker Brugstraat 2, +31 (0)43-3281366
www.harrysmaastricht.com

FOUNDERS BAR

The stylish hotel bar of Hotel Beaumont. Both traditional and on trend, with an unconventional, but very complete selection of drinks and pairing appetizers.

Lage Barakken 10, +31(0) 43 207 2452
www.foundersbarmaastricht.nl

BOUCHON D'EN FACE

Lyonnais-style bistro, offering classic dishes such as canard à l'orange. Enjoyable prices and a casual yet intimate atmosphere.

Wycker Brugstraat 54, +31 (0)43 3116438
www.bouchondenface.nl

NOON

A trendy hideout near the Meuse river with a great view of the city. Menu full of unique and tasteful dishes, cocktails and gin-tonics. Attractive wine list.

Griend 6-7, +31 (0)43 8200008
www.noonmaastricht.nl

'T PAKHOES

Cosy, family-run restaurant with a chef who loves time-honoured dishes. Offers a wine list of classic French wines.

Waterpoort 4-6, +31 (0)43 3257000
www.pakhoes.nl

ONGLET

Trendy speakeasy bar – restaurant that used to be a butcher's workplace. Onglet serves refined dishes in which the more special cuts of meat get to play the leading part.

Wycker Brugstraat 27,
+31 (0)43 8528847 www.onglet.nl

TUUR

A contemporary catering formula specialising in drinks and multi-course dining, with regular updates to the menu. Sint Maartenslaan 31b, +31 (0)43 700 9721 www.tuurmaastricht.nl

UMAMI BY HAN

Delicious, light Asian food in an inviting restaurant and at attractive prices. Stationsstraat 12, +31 (0)43 3510006 www.umami-restaurant.com

WEN-CHOW

An authentic and original Chinese restaurant opposite the main railway station. Spoorweglaan 5, +31 (0)43 3214540 www.wen-chow.nl

FLAVOURZ BY SERVAIS

As part of the Beluga Loves You(*)-family, this restaurant is very accessible, serving a variety of flavours and dishes from around the world. Spoorweglaan 2, +31 (0)43 7112263 www.flavourzbysevais.com

RESTAURANT O

Restaurant that serves fish, crustaceans and shellfish only, presented in the form of platters of fruits de mer and complete menus. Rechtstraat 76, +31(0)43 325 9747

JEF GASTROBAR

Fully renovated in 2023, after a fire destroyed the interior. The beloved fine dining formula remains unchanged. Rechtstraat 42, +31 (0)43 8554559 jefgastrobar.nl

BIKKE MAASTRICHT

Restaurant-bar driven by its love for Scandinavian lifestyle and food. Resulting in a whole host of bold flavours for breakfast, lunch, and dinner. Hoogbrugstraat 43a, +31 (0)43 7009775 www.bikkemaastricht.nl

TABKEAW

Traditional Thai kitchen, awarded with a Bib Gourmand by Michelin. Rechtstraat 102, +31(0)43 325 9712 Tabkeaw.nl

HOTELS

CROWNE PLAZA

International hotel right beside the Meuse river. Ruitertij 1, +31 (0)43 3509191 crowneplazamaastricht.com

AMRÂTH GRAND

HOTEL DE L'EMPEREUR

Hotel located in a national monument, located opposite the central railway station. Stationsstraat 2, +31 (0)43 3213838 www.amrathhotelempereur.com

HOTEL BEAUMONT

Located in the centre of Wyck, where timeless design and modern amenities meet history stretching back over a hundred years. Lage Barakken 10, +31 (0)43 3254433 www.beaumontmaastricht.com

DESIGNHOTEL MAASTRICHT

Trendy design hotel with over a hundred unique and luxurious rooms. Stationsstraat 40, +31 (0)43 328 2525 www.designhotelmaastricht.com

TOWNHOUSE DESIGNHOTEL

Designhotel Maastricht. Unique and modern boutique hotel where you experience authentic Limburg hospitality and 'gezelligheid' (conviviality and cosiness). Sint Maartenslaan 5, +31 (0)43 323 30 90 www.townhousehotels.nl

THE DUTCH

You'll feel as if you've been transported back to the 1980s with this hotel concept. Wilhelminasingel 60, +31 (0)43 3281369 www.hotelthedutch.com

KABOOM

Trendy design hotel right opposite the central railway station with a delightful patio on the first floor. Stationsplein 1, +31 (0)43 325 3340 www.kaboomhotel.nl

SHOPS

MAX

With a collection that changes weekly, MAX aims to surprise its customers with stylish designs by mainly French and Italian designers. Hoogbrugstraat 69, +31 (0)43 3644729 www.maxmaastricht.nl

HOT KITCHEN

Hot Kitchen Men's Boutique carries brands for the well-dressed man. In addition to clothes, Hot Kitchen also sells accessories and shoes. Rechtstraat 65a, +31 (0)43 850 1986 www.hot-kitchen.nl

LEON MARTENS

Leon Martens (est. 1907) is known as a leading jeweller in the Benelux. It is much loved by TEFAF regulars for its brilliant collection, craftsmanship, sense of style, and Limburgian hospitality. Brands include Rolex, Patek Philippe, and Pomellato. Stationsstraat 39-41, +31 (0)43 3256363 www.leonmartens.com

MESTRINI OPTIEK

Once you step inside Mestrini, you won't be leaving without a pair of new glasses. Inside this beautiful baroque building you'll find exclusive and handmade eyewear by Chrome Hearts, Celine, Dior, Dita, Jacques Marie Mage, Lindberg, Tom Ford, Hoffmann, and more. Stationsstraat 58, +31 (0)43 7112216 www.mestrini.nl

NOIR

Affordable French, Dutch, and Scandinavian fashion with a vintage twist. Wycker Brugstraat 38a, +31 (0)43 3116437 www.shopnoir.nl

VAN OVEREEM VAN WISSEN

Van Overeem van Wissen was established in 1998 and are located in Wyck with its Munro corner — specialising in tailor-made menswear, from shoes to suits. Customized outfits can be delivered worldwide. Van Overeem van Wissen also has an attractive, mainly Italian, ready-to-wear collection. Stationsstraat 25, +31 (0)43 3255039 www.vanovereemvanwissen.nl

JEKER KWARTIER

Because the Jekerkwartier is the oldest part of Maastricht, it's not surprising that remains from ancient fortification are found here. Over two thousand years ago, the first settlement next to the Meuse was built. In the basement of Hotel Derlon, located on the quaint Onze Lieve Vrouweplein square, you can still view these early Roman-era structures. On small streets, such as the Tafelstraat, you'll feel as if you're stepping back in time. In contrast, savour the majesty of the stately Grote Looierstraat, where many tanners once had workshops. Small shops, galleries, charming cafés and restaurants define the atmosphere here. The Koestraat, for example, has in recent years become one of the liveliest streets in town. Even in winter, people enjoy dinner and drinks on the outdoor terrace.



RESTAURANTS

AU COIN DES BONS ENFANTS

Run by two young, very enthusiastic entrepreneurs. The chef serves a French kitchen where vigorous sauces are the central element. Awarded with a Michelin star in 2023.
 Ezelmarkt 4, +31 (0)43 3212359
www.aucoin.nl

WINE RESTAURANT MES AMIS

This restaurant sets itself apart with its great selection of merely local wines and dishes based on local ingredients.
 Tongersestraat 5, +31 (0)43 3257866
www.mesamis.nl

CAFÉ SJIEK

Maastricht's first bistro – and still the most original. Hotspot to enjoy the simple yet good quality food and great wines at attractive prices, but also a great place to meet up with friends.
 Sint Pieterstraat 13, +31 (0)43-3210158
www.cafesjiek.nl

LE FERNAND

Popular bistro bar serving exclusively French dishes and wines.
 Stenenbrug 6, +31 (0)43 8528952
www.lefernand.nl

BAR BEURRE

Opened its doors in the fall of 2023. Run by two young entrepreneurs who show a bold, idiosyncratic approach of the French kitchen.
 Sint Pieterstraat 54, +31 (0)43 204 1548
www.barbeurre.nl

HOTELS

HOTEL BOTTICELLI

Small and romantic hotel inspired by the style of the Italian Renaissance, situated close to Vrijthof square.
 Papestraat 11, +31 (0)43 3526300
www.hotelbotticelli.nl

BOUTIQUE HOTEL SINT JACOB

Charming boutique hotel situated in a historic house in the heart of the city.
 Sint Jacobstraat 6, +31 (0)43 2030040
www.boutiquehotelsintjacob.nl

CHAMBRES D'HÔTES REKKO

A lovely small hotel in the charming Jekerkwartier district. Pleasant B&B rooms.
 Kleine Looiersstraat 8, +31 (0)43 3251841
www.chambre-rekko.nl

LE VIRAGE

Small hotel close to Onze Lieve Vrouweplein square, with the rooms situated above a small restaurant.
 Cortenstraat 2b, +31 (0)43 3216608
www.levirage.nl

ZENDEN DESIGN HOTEL

Boutique hotel with a pristine white interior. Swimming pool and gym available. Several good restaurants are located in the same street.
 Sint Bernardusstraat 5, +31 (0)43 3212211
www.zenden.nl

HOTEL LES CHARMES

Romantic boutique hotel in the historic city center of Maastricht with spacious bedrooms.
 Lenculenstraat 18, +31 (0)43 3212521
www.charmes.nl



HOTEL AU QUARTIER

Renovated town house in the heart of Maastricht's Quartier Latin.
Kapoenstraat 32, +31 (0)43 3258088
www.auquartier.nl

SHOPS

ADRIAAN DE SMAAKMAKER

Large assortment of traditionally made mustards, jams, chutneys, dressings, vinegars, mayonnaises, and more.
Handcrafted with local ingredients.
Sint Pieterstraat 36, +31 (0)43 325 8865
www.adriaandesmaakmaker.nl

BOEKHANDEL DE TRIBUNE

Best literary bookshop in the Netherlands; over more than 30 years a cultural rendezvous point with a collection of literature and poetry.
Kapoenstraat 8, +31 (0)32 325 1978
www.detribune.nl

GOESTING

The wine merchant of wine restaurant Mes Amis, with a large selection of wines solely from Belgian and Dutch Limburg soil.
Tongersestraat 1, +31 (0)43 325 7866
www.goestinginwijn.nl

LE MARAIS DEUX & KOFFIE

Concept store with a vast collection of apparel, accessories and shoes for men and women. Physically connected to the funky coffee bar KOFFIE by Joost & Maartje.
Maastrichter Heidenstraat 6,
+31(0)6 25396972, lemaraisdeux.com

SNACKERS ANTIQUES & FINE ART

Art dealer specialised in in religious art and antiques. Delivery service inside and outside Europe.
Sint Pieterstraat 21a, +31(0)6 81 92 51 06
www.snackersantiques.com

MANU FACTU

Vast collection of handmade, original and durable items, run by artistic women.
Sint Pieterstraat 20, +31 (0)43 311 8939
www.manufactu.nl

TORO INTERIOR DESIGN

Exceptional collection of exclusive English interior.
Sint Pieterstraat 26, +31(0)43 325 1557
www.torodesign.nl

ARTEUX ART & DESIGN

Specialised in inventing, designing, and creating special art and design objects.
Sint Pieterstraat 28, +31(0)43 326 0490
www.arteaux.nl





STOKSTRAAT KWARTIER

The Onze Lieve Vrouweplein square reminds visitors of France. The Basilica of Our Lady is the dominant landmark here. Many locals, religious or otherwise, enter the Chapel of Our Lady to light a candle. The church itself showcases wonderful art, and even has a separate treasury, highlighted by religious art. The OLV square leads to the Stokstraatkwartier, named after the Stokstraat. In industrial times, this street was notorious for social upheavals, poverty and prostitution. After an extensive overhaul, it is now the poshest shopping street in town. Proprietors on surrounding streets have responded in kind. This area contributes to Maastricht's success as a destination for both shopping and nightlife. Especially on the weekends, the area teems with people, not only from the surrounding villages, but also visitors from the rest of the Netherlands and neighbouring countries.

RESTAURANTS

RESTAURANT ROZEMARIJN

Near the Onze Lieve Vrouweplein square, this friendly restaurant provides light and delicious cuisine and serves wonderful wines.

Havenstraat 19, +31 (0)43 4506505
www.restaurant-rozemarijn.nl

VINO&FRIENDS

A trendy Italian gastropub and wine shop in the centre of the city. Italian dishes and 350 different wines.

Plankstraat 6, +31 (0)43 3218456
www.vinoandfriends.nl

BRANDSØN

Snazzy restaurant. The new chef cooks up a cuisine combining the classic basis with his kitchen team's international roots.

Het Bat 2, +31 (0)43 2012620
www.brandson.restaurant

LOUIS BRASSERIE

Located in Hotel Derlon, home to a modern restaurant serving French-Mediterranean cuisine and a selection of divine wines.

O.L.Vrouweplein 6, +31 (0)43 3216770
derlon.com/brasserie-louis

HOTELS

DERLON HOTEL MAASTRICHT

Located on Onze Lieve Vrouweplein square, where Maastricht feels a little like Paris. This luxurious hotel, almost 150 years old, is built on top of Roman remains.

Onze Lieve Vrouweplein 6,
+31 (0)43 3216770, www.derlon.com

SHOPS

KIKI NIESTEN

The average TEFAF visitor knows where to find Kiki Niesten. With fantastic collections that feature brands like Prada, Valentino, Celine, and Alaïa, Kiki manages to surprise and delight fashion-lovers and art enthusiasts alike.

Stokstraat 28-32, +31 (0)43 3216432
www.kikiniesten.nl

SHOES & SHIRTS

Interesting boutique that carries high-end shoes, shirts, and accessories for real gentlemen, as well as a small collection of women's shoes. Here you'll find both their own brand and several other brands.

Havenstraat 23, +31 (0)43 3255518
www.shoesandshirts.nl

WEEKEND MAX MARA MAASTRICHT

Opened in January 2024: The second Max Mara shop in Maastricht showcases the Italian brand's Weekend line.

Maastrichter Smedenstraat 23,
+31 (0)43 327 2472

NICOLE EXCLUSIEVE DAMESMODE

The product range of Nicole's exclusive womenswear includes collections by Moschino Boutique, Red Valentino, Missoni, Blumarine, and Versace.

Stokstraat 46, +31 (0)43 3218840
www.schins.nl

7 FOR ALL MANKIND

A high-end jeans brand located in an elegant townhouse in the heart of Maastricht. You can also find dresses, jackets, and polo shirts.

Stokstraat 17, +31 (0)43 3255831
www.7forallmankind.nl

LIU JO

The Italian Liu Jo is well-known for its elegant and glamorous womenswear and childrenswear. Lui Jo collections include unique print-on-print, faux fur and shiny metallic items.

Stokstraat 31, +31 (0)43 3211985
www.liujo.com

SARAH PACINI

An Italian fashion brand known for its unique combination of creativity and limitless possibilities. Sarah Pacini carries women's fashion, accessories, sunglasses, and shoes.

Stokstraat 34, +31 (0)43 3263772
www.sarahpacini.com

NN07 BY SKETCH.

Part of the Sketch-family. In this futuristic and simplistic store you're welcome to explore a great collection of the Scandinavian brand No Notanionality as well as APPLIED ART FORMS, Golden Goose, Common Projects, SALLE PRIVÉE, and D.S. & Durga

Stokstraat 35, +31 (0)438 55 21 86
www.sketch-store.com

PAUW

A carefully curated collection of women's and men's fashion brands, among which their own brand as well.

Havenstraat 3, +31 (0)43 3255701
www.pauw.com

SCHINS ATELIER

In addition to high-quality skins, you can also find brands such as Lorena Antoniazzi, Dorothee Schumacher, and Fabiana Filippi.

Maastrichter Smedenstraat 15,
+31 (0)43 3215607
www.schinsatelier.com

WOOLRICH

Woolrich is edgy yet feminine, sporty yet stylish. At Woolrich Maastricht, you will find a wide selection of jackets, everyday fashion, and accessories.

Maastrichter Smedenstraat 19,
+31(0)43 3250126

NIKKIE

Women's fashion by Dutch designer Nikkie Plessen. NIKKIE's style can best be described as strong and elegant but with a distinctive touch.

Stokstraat 3, +31(0)43 3212244
www.nikkie.com

NATAN / PAULE KA

Two Belgian fashion brands under the same roof. Here you may find the biggest NATAN store of the Netherlands and several collections of Paule Ka.

Plankstraat 10, +31 (0)43 3100622



Maastricht | Plankstraat 25 | T. 043 - 325 44 65
Mon 13.00 - 18.00 | Tue-Wed-Thu-Fri 10.00 - 18.00 | Sat 10.00 - 17.30
Open every Sunday 12.00 - 17.00

Laren | Nieuweweg 11 | T. 035 - 531 84 89
Breda | Grote Markt 9 | T. 076 - 520 72 87



SPHINX KWARTIER

The Industrial Revolution arrived in Maastricht with the Sphinxkwartier, once dominated by ceramics factories. The industrialist Petrus Regout developed Maastricht as the first industrial city of the Netherlands. Though industrialisation brought wealth and prosperity, particularly for the Regout family, there were labour and social problems, too. Working conditions in the nineteenth and early twentieth centuries were poor, as was the pay.

The ceramics factories eventually shut down. After a quiet period, the district reinvented itself as a magnet for creatives and students. It boasts a music venue, several cinemas, restaurants, and even a sky bar on the top floor of the old factory. The district includes the historic inner harbour, 't Bassin, with its host of inviting restaurants. From here, you can walk along the splendid, broad Boschstraat to the market square, the heart of the city. The Boschstraat not only offers an increasing number of successful bars and restaurants, but also trendy small shops. Almost at the end, where the fish market is held on Fridays, you'll find the relatively small church of St Matthew; the interior is a little gem. Unfortunately, visiting is only possible during mass. One of the great things about taking in Maastricht's grandeur and international appeal is manageability. The city is compact: the areas of interest are within walking distance of each other.

RESTAURANTS

NOVO NEW DINING

An established name in Maastricht and far beyond. Creative and very reasonably priced dishes with an unmistakable, contemporary flair.

Aan de Brikkebouw 4f, +31(0)43 204 1169
novo-dining.com

FITZ ROY

Accessible fine dining formula that combines seasonal flavours with international influences. Part of Fitz Roy Urban Hotel.

Boschstraat 70, +31 (0)43 3030700,
www.fitz-roy.nl

HOTELS

MABI

Luxurious hotel located inside an old, renovated cinema near the Markt square.

Kleine Gracht 24, +31 (0)43 3514444
www.hotelmabi.nl

FITZ ROY - URBAN HOTEL, BAR AND GARDEN

This trendy hotel is an oasis of green tranquility at a unique location right in the heart of the city.

Boschstraat 70, +31 (0)43 3030700
www.fitz-roy.nl

HOTEL MONASTÈRE

Paris chic meets vintage Maastricht, located in a former monastery in the Sphinxkwartier district.

Boschstraat 71, +31 (0)43 8700240
www.hotelmonastere.com

SHOPS

BLANCHE DAEL

Roasting company, coffee café and shop by the famous Maastricht coffee brand Maison Blanche Dael. Experience, taste and purchase something to take home.

Aan de Brikkebouw 10
 Winkel: Wolfstraat 28,
 +31 (0)43 410 0043, www.blanchedael.nl

KUNSTUILEEN

MAASTRICHT SPHINXKWARTIER

Gallery of the well-known art library concept with extensive collection of works by a variety of national and international artists.

Boschstraat 87, +31(0)43 321 33 11
 (Wyck: Rechtstraat 50)
www.kunstuitleenmaastricht.nl

ISKANDER

Small-scale and quaint interior shop with a unique collection of fabrics.

Boschstraat 65, +31(0)43 325 7883

LOADS 5

Furniture department store for all your needs: a mix of accessories, furniture and eye-catching items by over a hundred suppliers.

Sphinxcour 5, +31(0)88 655 0555
www.loads5.nl



CITY CENTRE

The City Centre may be a bit vague when applied to Maastricht, because one could definitely include the Jekerkwartier and the Stokstraatkwartier. However, these districts like to set themselves apart. Consequently, the City Centre consists of the busiest shopping streets, including the Maastrichter Brugstraat and the Kleine and the Grote Staat. These streets are home to many of the larger retail chains. Unlike Wÿck, this area is not a blend of shops, restaurants and residences. However, bars and restaurants are within easy reach since the Grote Staat leads to the Vrijthof, the most famous of the city's squares. It's a splendid square, bordered by the grand iconic churches of Saint Servatius and Saint John. In addition, there is the Theater aan het Vrijthof, the Fotomuseum aan het Vrijthof, and the Main Guard building. The east side of the square is lined by grand cafés and their attractive, carefully decorated terraces. Many tourists come here to relax, eat and drink. The square has gained more renown internationally thanks to the annual open air-concerts by André Rieu, Maastricht's most famous citizen. On stages worldwide, he boasts of his city, and – with some bravado – calls the Vrijthof the most wonderful square in the world. But it worked! Every July, tens of thousands of fans from across the globe come to Maastricht to experience his concerts. The City Centre completes its array of shops with the modern shopping areas Mosae Forum and Entre Deux. Arguably the country's most beautiful bookshop is located in the Dominican Church.

RESTAURANTS

TOUT À FAIT

Restaurant by Bart Ausems serving an intriguing, contemporary cuisine.

Opened in 1999, holding a Michelin-start since 2002.

Sint Bernardusstraat 16-18,
+31 (0)43 3500405 www.toutafait.nl

IL GIARDINO

A popular place with a friendly, family-like ambiance. Serves Italian food at reasonable prices.

O.L.Vrouweplein 15, +31 (0)43 3256229
www.ristoranteilgiardino.nl

RESTAURANT 55

Set in a baroque-style interior, the restaurant's dynamic young team prepares French dishes at a reasonable price.

Heggenstraat 3a, +31 (0)43-3251762
www.restaurant55.nl

LE BON VIVANT

Dutch cuisine served in this hidden vaulted cellar. Time and again chef Björn Dijkstra is able to set the right tone in terms of flavour.

Capucijnenstraat 91, +31 (0)43 321 0816
www.lebonvivant.nl

RISTORANTE IL FIORE

Cosy restaurant right at the border or the Meuse. Original Italian cuisine and a warm atmosphere.

Kesselskade 59, +31 (0)43 8528099
www.ilfiore.nu

SPENCER'S

New restaurant formula at the Kruis-herenhotel. Accessible eclectic bistro with a French orientated menu.

Kruisherengang 19, +31 (0)43 3292020
www.chateauhotels.nl

LUSTER

Mediterranean bistro at the Vrijthof square. Popular and accessible formula where shared dining dishes play the key role.

Extensive menu for drinks and cocktail. Vrijthof 10, +31 (0)43 321 9956
luster.nl

HOTELS

KRUISHERENHOTEL

Design hotel with historic details dating from the fifteenth-century monastery in which it is situated. The only five-star hotel in town.

Kruisherengang 19-23,
+31 (0)43 3292020
www.kruisherenhotel.nl

AMRÂTH HOTEL DUCASQUE

Classic, comfortable hotel near Vrijthof square.

Helmstraat 14a, +31 (0)43 3214343
www.amrathhotelducasque.nl

BOUTIQUE HOTEL LE THEATRE

Hotel on Vrijthof square next to the theatre. Lovely rooms decorated in the French style with a great view, located in the heart of the city.

Vrijthof 50, +31 (0)43 303 0280
www.letheatre.nl

DOPPELGÄNGER

The first shop outside Italy by the famous Roman brand Doppelgänger, offering quintessential Italian sprezzatura at more-than-reasonable prices.

Wolfstraat 29 +31(0)43 205 0994

HOTEL BRASSERIE BRITANNIQUE

Hotel on Vrijthof square, boasting several trendy suites. Located above a restaurant with terrace.

Vrijthof 6, +31 (0)43 3218691
www.britannique.nl

MAISON HAAS HUSTINX

Boutique hotel in a beautiful old building on Vrijthof square. Luxurious interior, unique rooms and a spa located underneath the Vrijthof square.

Vrijthof 20, +31 (0)43 8524353
www.haashustinx.nl

COUSINS BOUTIQUE HOTEL

New, intimate boutique hotel in a quiet part in the center of the vibrant city. It was proclaimed 'Best New Small Hotel' in 2023. Capucijnengang 12, +31 (0)43 700 9722
www.cousinsboutiquehotel.com

S H O P S

PL-LINE

PL-Line carries a wide range of luxury fashion brands for both men and women. PL-Line opened a second store next door, where they sell luxury sportswear.

Bredestraat 7 - 9, +31 (0)43 3250853
www.pl-line.com

MATNIQUE

Scandinavian designed apparel: loose-fitting, stylish, casual, and perfect for all occasions.

Wolfstraat 6, +31 (0)43 2089440
www.mantiquemaastricht.nl

MARC CAIN

Marc Cain is a declaration of love to all women, with an extensive collection of women's clothing and accessories that sets high demands in terms of quality and design.

Plankstraat 25, +31 (0)43 3254465

SKETCH.

sketch. is a young, empowered, creatively driven fashion space located in the heart of Maastricht. They sell fashion for both men and women by brands such as Isabel Marant, Marni, Maison Margiela, Golden Goose, Philosophy, Common Projects and many more.

Bredestraat 2a, +31 (0)43 8552186
www.sketch-store.com

KYMYKA

A mecca for bag enthusiasts and shoe aficionados, with Louboutin's famous red-soled high heels as their key item.

Minckelersstraat 7, +31 (0)43 3261770
www.kymyka.com

K-ATELIER/K-STORE

Italian style fashion for men.

With the best Italian labels and also on request 100 % handmade suits.
Bredestraat 20, +31 (0)43 3111165
k-atelier.nl

DE BIJENKORF

A luxury department store that carries fashion, leather goods, cosmetics, home accessories, gifts, and more.
Achter het Vleeshuis 26,
+31 (0)88 2454488, www.debijenkorf.nl

MAX MARA MAASTRICHT

MaxMara is a luxury Italian fashion house that includes 9 lines. The MaxMara womenswear line is still the core of the company.
Bredestraat 2, +31 (0)43 350 0840
www.modemaastricht.nl

CUBE28

Interior studio with a collection of distinct home accessories and eyecatchers, and a selection of furniture. The place to be for tailor-made interior advice.

Minckelersstraat 28, +(0)43 352 0661
cube28.nl

SCHAAP EN CITROEN

This is your luxurious destination for jewellery and watches, offering renowned brands such as Rolex, Pomellato, Cartier, Messkika, Omega, Royal Asscher, and Breitling.
Maastrichter Brugstraat 35,
+31 (0)43 205 8159, www.schaapcitroen.nl

FALKE

Quality and design are the main principles of the famous brand Falke, offering a great choice of knitted legwear, body wear, and fine hosiery.
Maastrichter Brugstraat 28,
+31 (0)43 2200181 www.falke.com

BOEKHANDEL DOMINICANEN

"The fairest bookshop of the world, a bookshop made in heaven". This bookstore holds the biggest stock of books in English in Maastricht, stored in an old Dominican church.

Dominicanerkerkstraat 1,
+31 (0)43 4100010
www.libris.nl/Dominicanen



ST. PIETER & REGION

For those seeking a relaxed atmosphere, it's best to go southward to St. Pieter, a residential district that borders a magnificent nature area. The shops and restaurants here are frequented by locals, and the mostly quiet streets boast wonderful houses. Though the atmosphere is sedate, the lively centre is very close. On the outskirts of this neighbourhood lies the St. Pietersberg, from which you'll have a magnificent view of the city. You can also walk further south toward the former Enci cement factory, where you'll have splendid panoramic views over the Meuse. Cargo vessels and pleasure boats take the passage onto the Albert Canal or go through the impressive locks at Ternaaien toward Liège. Belgium is literally next door and the language changes to French. Even so, the Maastricht dialect contains many words influenced by the 'neighbours'. One of Maastricht's unique attractions is its proximity to the rolling hills of the countryside. You can reach these in no time. And, if you didn't know better, you'd think you entered another country.

RESTAURANTS

RANTRÉE

A great place on the outskirts of the city with a great view of the city and the Belgian border. Serving top level dishes, and even a Michelin-starred fully vegan menu. Het Wilhelmus 30L, +31 (0)43 3215140 www.rantree.nl

CHÂTEAU NEERCANNE

Set in a classic and grand building and boasting a spectacular wine cellar, Château Neercanne serves modern French cuisine and offers excellent service. Awarded one Michelin star in 2023. Von Dopfflaan 10, +31 (0)43 3251359 www.chateauhotels.nl

AUBERGE

The lunch restaurant at Château Neercanne serves a very local menu containing many ingredients from their own vegetable garden. Von Dopfflaan 10, +31 (0)43 325 1359 oostwegelcollection.nl

PRIX DE ROME

Popular restaurant just outside the city centre with a nice atmosphere and a good French cuisine at a Michelin Bib Gourmand-level. Sussierweg 1, +31 (0)43 8080233 www.prixderome.nl

SOFA

Situated at the edge of a marina, this modern restaurant offers contemporary dishes in a peaceful setting. Hoge Weerd 6, +31 (0)43 3671337 www.sofamaastricht.nl

HOTELS

CHÂTEAU NEERCANNE

Opening for TEFAP 2024: the long awaited suites at the Château Neercanne estate, on the border of Maastricht and Kanne. Seven luxurious hotel suites with a unique style and special view. Von Dopfflaan 10, +31 (0)43 325 1359 oostwegelcollection.nl

DORMIO HOTEL DE PRINS VAN ORANJE

Hotel in a luxury holiday villa park with a panoramic gastro-restaurant on the top floor. Located outside the city centre near the golf course. Het Wilhelmus 1, +31 (0)85 013 4040 www.dormio.nl

NH MAASTRICHT

Maastricht's biggest hotel, located right next to the MECC where TEFAP takes place. Perfect for business and leisure stays. Forum 110, +31 (0)43 3838281 www.nh-hotels.com

HOTEL VAN DER VALK

Large and modern hotel with extensive facilities, close to the MECC, on the other side of the highway. Nijverheidsweg 35, +31 (0)43 387 3500 www.hotelvandervalkmaastricht.nl

BUITENPLAATS VAESHARTELT

Comfortable luxury in a seventeenth-century castle, surrounded by nature on the edge of Maastricht. Weert 9, +31 (0)43 3690200 www.vaeshartelt.nl

RESTAURANTS & HOTELS ELSEWHERE IN LIMBURG & BORDER REGION

BRUT172

Run by famous Michelin-starred chef Hans van Wolde, bringing the flavours of nature to life in combinations that are sure to wow. Awarded two Michelin stars. Reijmerstokkerdorpstraat 143, Reijmerstok www.brut172.com

RESTAURANT JULEMONT

High level, classic French cuisine in a romantic atmosphere, situated in hotel Château Wittem. All under the stewardship of chef Guido Braeken who received two Michelin stars in 2022. The sommelier offers great wines. Wittemer Allee 3, Wittem +31(0)43 4501208 www.chateauwittem.com

ATELIER

A high quality restaurant in a contemporary style, with tables situated around the kitchen. Earned one Michelin star. Fantastic wine list. Markt 9, Gulpen +31 (0)43 4504490 www.restaurantatelier.nl

HOTEL- KASTEEL TERWORM

Lovely restaurant in a small lovely castle. Offers an international cuisine and a nice wine list. The hotel lets you experience tranquility, luxury, and relaxation. Terworm 5, Heerlen, +31 (0)45 4001111 www.terworm.nl

SLENAKER VALLEI, BOUTIQUE HOTEL & RESTAURANT

Charming restaurant in one of the most beautiful villages in the hills of Limburg. Carefully curated dishes of high quality and prepared with local ingredients. Dorpsstraat 1, Slenaken +31(0)6 13 23 57 89

LES SALONS

Situated in the magnificent and luxurious country estate Château St. Gerlach. The kitchen uses many products from its own vegetable and herb garden. Joseph Corneli Allée 1, Valkenburg +31 (0)43 6088888 www.chateauhotels.nl

AMBROZIJN

Located in an old church, where chef Sven Nijenhuis combines French cuisine with new cooking techniques. Plenkertstraat 45 +31 (0)43 2003068 www.restaurantambrozijn.nl

DE LEUF

Great Michelin star restaurant in a modern, renovated farmhouse. Creative and slightly exotic cuisine with Asian influences and a good wine list. Dalstraat 2, Ubachsberg +31 (0)45 5750226, www.deleuf.nl

PIRANDELLO

Italian restaurant situated at Hotel Winselerhof in a fully refurbished interior with a gorgeous view of the garden and the restaurant's own vineyard. Tunnelweg 99, Landgraaf +31 (0)45 5464343 www.chateauhotels.nl

DA VINCI

Restaurant at the marina with cuisine awarded with a Michelin star and created by the best female chef in the Netherlands, Margo Reuten. Her partner Petro Kools serves outstanding wines. Havenstraat 27, Maasbracht +31 (0)475 465979, www.restaurantdavinci.nl

ONE

A great restaurant with a regular and a green Michelin star. Creative cuisine, focused on local and home grown ingredients, by Edwin Soumang. Bethany DeLong serves great wines from all over the world. ECI 17, Roermond +31 (0)475 600262 www.restaurantone.nl

DAMIANZ

Situated in Hotel Arresthuis ***** Restaurant located in a former holding facility. Passionate chef Jeroen van Ganswinkel runs a top quality kitchen. ECI Pollartstraat 7, Roermond +31 (0)475 870870, www.damianz.nl

RURA

Youthful passion in an intimate setting in the heart of Roermond. Creative dishes and wine selection. Lufelstraat 32, Roermond +31 (0)475 700 111, ruraroermond.nl

HET GERECHT

Charming, homelike restaurant, named after the court which once was located here. Surprising, unconventional combinations of flavours. Hellige Geeststraat 27, Roermond +31 (0)475 315 389

RALF BERENDSEN

Situated in luxury resort La Butte aux Bois ***** The restaurant has been awarded two Michelin stars and is very ambitious. A highly creative and contemporary cuisine that uses high quality ingredients, great wines, and a dynamic team of personnel and service staff. Paalsteenlaan 90, Lanaken (B) +32 (0)89-739770 www.labutteauxbois.be

DORMIO WIJNHOTEL VALKENBURG

Located right across from Valkenburg's train station, transformed into a wine hotel a few years back. Stationsstraat 21, Valkenburg +31 (0)43 6013741, www.wijnhotelvalkenburg.nl

HOTEL KASTEEL BLOEMENDAL

An island of tranquility in Vaals, the border town in the tri-border area. Located in a fully renovated castle on an immense estate. Bloemendalstraat 150, Vaals +31 (0)43 365 9800, www.hotelbloemendal.nl

SHOPS ELSEWHERE IN LIMBURG & BORDER REGION

DESIGNER OUTLET ROERMOND

Shoppers from all over the world find their way to Designer Outlet Center McArthurGlen in Roermond, because nearly all international luxury fashion brands have one or more outlet stores here. Stadsweide 2, Roermond +31 (0)475 351777, www.outlets.mcarthurglen.com

Brightlands: Representative of Groundbreaking Limburg





Change is integral to our culture in Limburg. Though confident of our identity, our tradition is one of continual reinvention. Consequently, we look toward the future with optimism. “The future is bright,” and we shape that future together at Brightlands in groundbreaking Limburg, the heart of Europe. From the site of the former

state mines, we developed the centre of the Dutch chemical industry. As fossil fuels become scarce and the climate changes, the chemical industry shifts towards sustainability and green initiatives. It’s an example of the resilience that defines the very essence of our region. We’ve learned how to live through momentous change, how to

stand tall and how to make a virtue of a necessity. We persevere, invent and produce. We are conscious of both the possibilities and the challenges that change sometimes entails.

Brightlands joins forces with large international companies, hundreds of specialised SMEs, two universities, post-secondary colleges, and governments. Our mission is that all of Limburg benefits from the development and application of our innovations. To do so, we strive to attract and retain talented individuals to drive the whole region forward. We aspire that economic growth goes hand-in-hand with social progress through, for example, providing opportunity to all people, their ability, and making quality education, healthy food and sustainable energy available to everyone. In this way, we build a society upon the foundation of knowledge development and innovation in which everybody can participate.

Regional cooperation leads to solutions to contemporary challenges and to national and international opportunities. It is no wonder that this province with its unique location, mostly bordering foreign countries, thinks and acts in groundbreaking ways with a view to Europe. This is a region near a vast expanse of German and Belgian cities, numerous knowledge institutions and millions of people.

Brightlands Campuses

In order to constantly drive innovation, the province, Maastricht University and partners created four locations to encourage entrepreneurship and talent development: the Brightlands

Campuses. The four Brightlands locations allow for a profile of scientific advancement and gladly represent an international region with many economic opportunities. The campuses are home to some four hundred businesses, providing employment to about sixteen thousand people and training to fourteen thousand students. It’s an ecosystem of considerable scale and muscle. For example, the Chemelot Campus in Sittard-Geleen develops new chemicals and materials for a sustainable society. At a campus adjacent to the university hospital in Maastricht, advancements in predicting and preventing diseases are gaining momentum. These include revolutionary developments in culturing and replacing cells, tissues, and eventually even growing and replacing entire organs. Health and sustainability also provide the focus at the Venlo campus. There, researchers are exploring how, calibrated to the needs of each individual, the proper quantity and composition of nutrients may prevent illnesses and improve the effectiveness of medication. We are at the threshold of breakthroughs that not only contribute to sustainably feeding the expanding world population, but also improving people’s health worldwide. The fourth Brightlands Campus is in Heerlen, which, as part of the national AI coalition, develops knowledge and applications regarding artificial intelligence and data sciences, with the goal of improving public services and safety, and to boosting sustainable industry, health and healthcare.





Stephan Satijn, Regional Minister, says to be proud on the label Innovation Leader, what brings the region of Limburg in the top of the European innovation. „Brightlands is the brand for innovation in Limburg. And if the Einstein telescope will come to our region, that will bring our economy an enormous boost.”

Borderless Connections

Our Brightlands Campuses are the centres of innovative power in Limburg: open environments where entrepreneurs, researchers and students join forces to innovate, take chances, defy frontiers, and realise breakthroughs. Each with their own speciality, but all strongly connected with one another.

Based on the data knowledge from Heerlen, you can link the Chemelot cleanrooms – to the health expertise from Maastricht and the nutritional knowledge from Venlo, opening new worlds of endless possibilities with regard to health and sustainability. And this is not limited to the campuses: Brightlands is the name for all

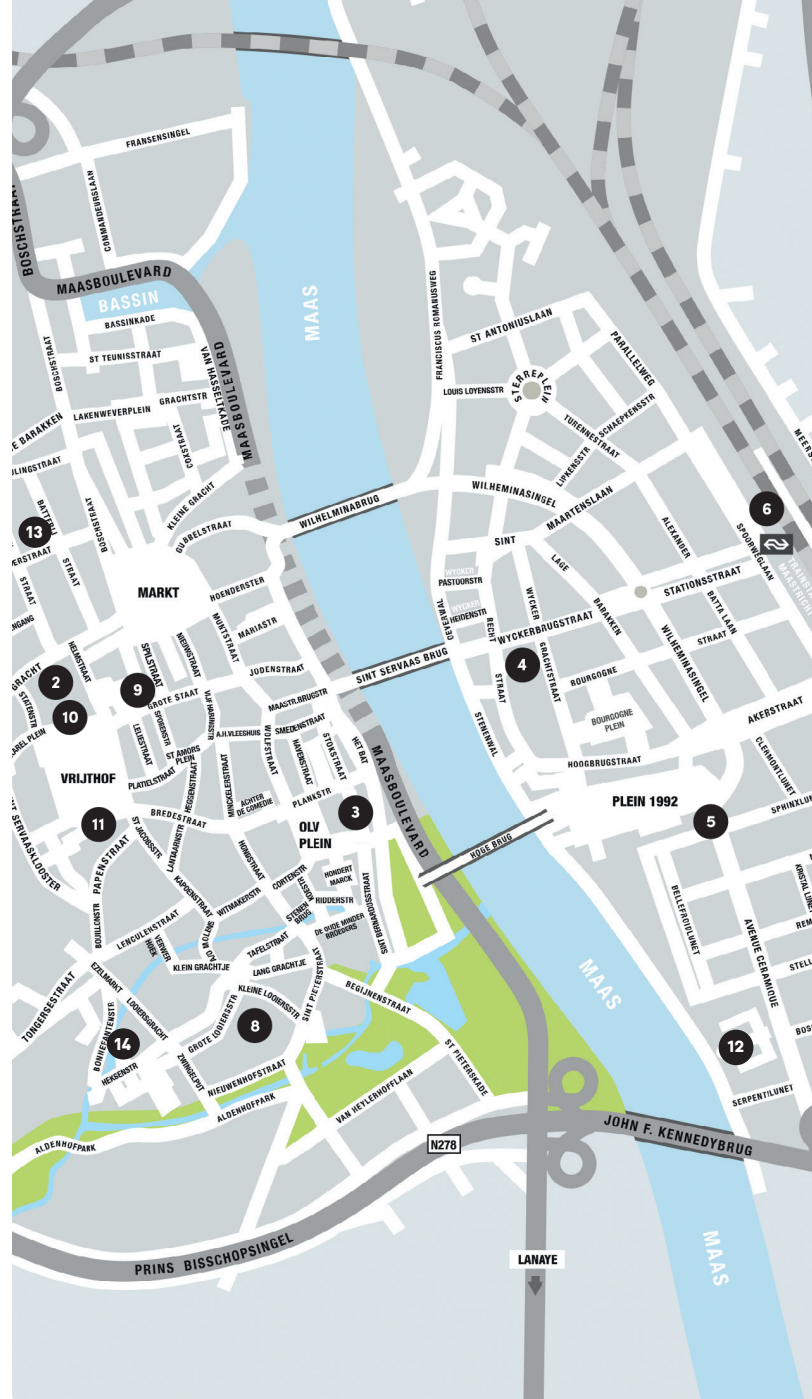
seeking growth and development in Limburg – every organisation, every company, every person. Together we are working on solutions to the major challenges of our time, sourcing new funds and creating a vibrant climate supportive of a greater scope for innovation. This is how Limburg can explore new frontiers for humankind and become a dynamic place for companies, institutes and residents. Wherever Brightlands flourishes in Limburg, people reap the benefits. This is due both to the innovations we develop and the opportunities we extend to a diverse array of talented individuals. There are opportunities for study, work, entrepreneurship, and, above all, the promise of a great life. We welcome whoever wants to move forward with us. You will enjoy the area's affordable housing, the space

to establish your company, quality education, warm ties to Belgium and Germany, the culture, and the unique landscape. Our region is not only innovative in the Brightlands way, but also hospitable in the Limburg way. We're giving talent the chance to excel at the interface of sustainability and health, and to cooperate in something as extraordinary as the Einstein Telescope, a deep underground connection between three European countries. This European project aims to discover the origins of our universe, and the international Brightlands region has announced as a candidate for it. It's an example of how our tradition of innovation continually adapts to new times and circumstance, moving towards a future worthy of the name of innovative Limburg: Brightlands. www.brightlands.com



City Plan Maastricht

- 1 — MECC
- 2 — HISTORICAL CITY-CENTER
- 3 — STOKSTRAAT QUARTER
- 4 — WYCK QUARTER
- 5 — CERAMIQUE QUARTER
- 6 — CENTRAL RAILWAY-STATION
- 7 — RANDWYCK RAILWAY-STATION
- 8 — JEKER QUARTER
- 9 — DOMINICANEN BOOKSHOP
- 10 — THEATRE AN HET VRIJTHOF
- 11 — MUSEUM OF PHOTOGRAPHY
- 12 — BONNEFANTEN
- 13 — MARRES, HOUSE OF CONTEMPORARY ART
- 14 — NATURAL HISTORY MUSEUM





TEFAF week

L1 TV and L1.n/TEFAF

From March 11 to 15 - every day
7:50 PM | 8:50 PM | 9:50 PM

